

Model: RMS Brew Mill Vertical Auger

Belts: (1) A50, (2) A47

Bearings: (3) 1" SQ 4-Bolt Set Screw Ball Bearings
(1) 1-3/8" SQ 4-Bolt Flange Roller Bearing



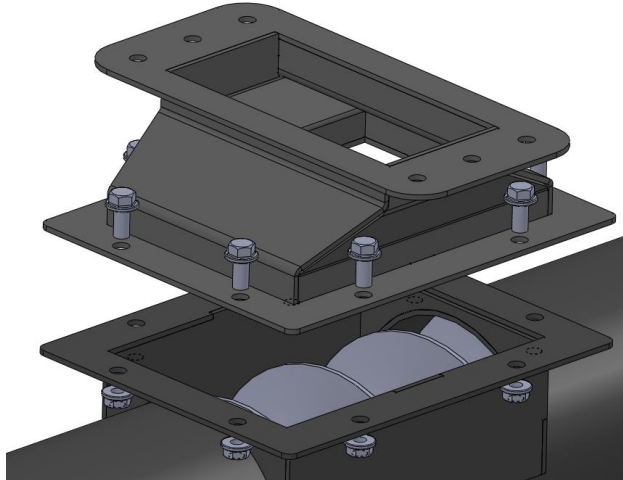
Table of Contents

Installation	Pages 3-4
Lubrication	Page 5
Belt Tension	Pages 6-8
Electrical Instructions	Pages 9-10
Parts & Service	Page 11
Contact Info	Page 12

Installation:

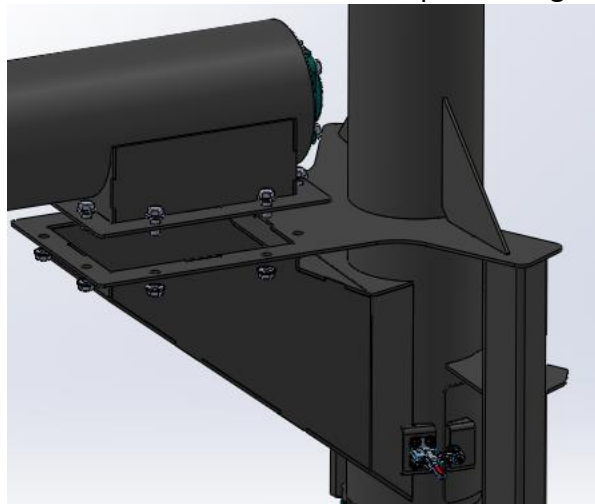
Installing Horizontal portion of Auger to Mill:

Position Horizontal section of Auger under mill so mounting flange of Transition discharge lines up with mounting flange on Auger as depicted in image below. PSA backed foam seal should be used to between the two flanges to make the joint dust tight. Secure the Auger to the mill with 3/8" flange bolts and nuts also as shown in image.



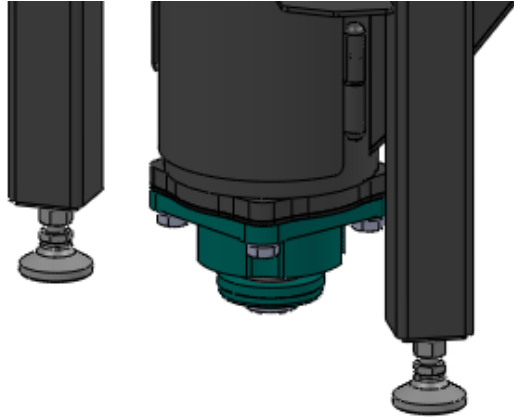
Installing Vertical portion of Auger to Horizontal section:

Position Vertical section of Vertical Auger under Horizontal section so mounting flanges of both sections are aligned as depicted in image below. PSA backed foam seal should be used to between the two flanges to make the joint dust tight. Secure the two sections together 3/8" flange bolts and nuts also as shown in image. Lifting bracket has been provided on Vertical section to aid in positioning the Vertical section.



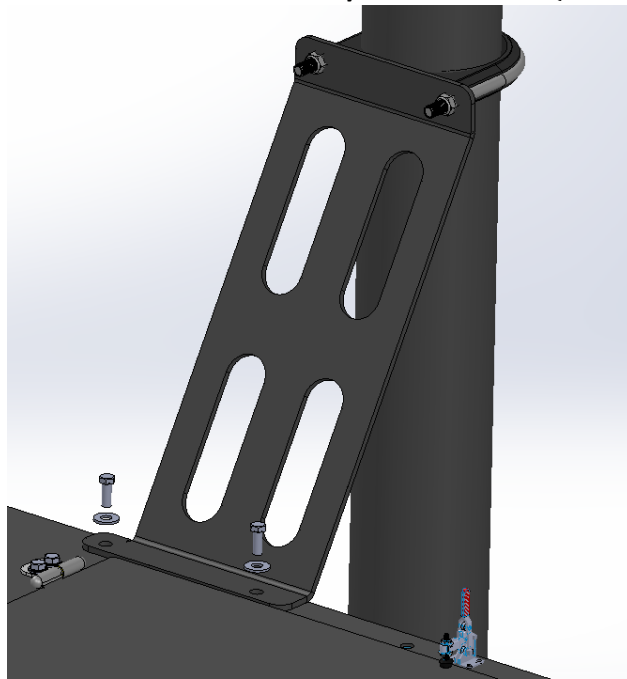
Leveling Vertical Auger:

Adjust leveling feet on the bottom of Vertical Auger legs and then secure in place by tightening lock nuts.



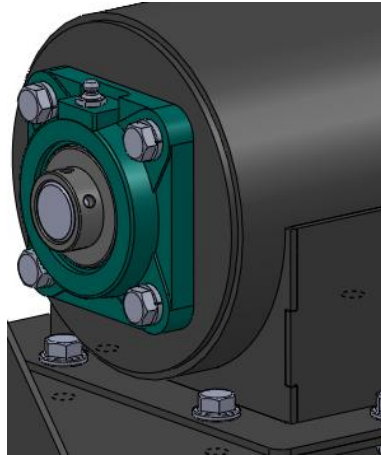
Securing Vertical Auger to mill with Support Bracket:

Clamp support bracket to Vertical tube with “U”-bolt clamp and to mill with two 3/8” bolts and nuts. Depending on overall height of Vertical Auger, additional support may need to be added to secure Vertical section. **IMPORTANT: THE UPPER SECTION OF THE VERTICAL AUGER SHOULD BE SECURED TO STABLE STRUCTURE TO PROVIDE ADDED STABILITY AND HELP MINIMIZE VIBRATION. ALSO BE SURE MILL/STAND IS ADEQUATELY SECURED.**



Lubrication:

All bearings should be greased following the greasing schedule. Before greasing, grease zerks should be cleaned to prevent contaminants from entering the bearing.



The bearings on the Vertical Auger cannot be over greased. Any excess grease will purge through the seals on the front and rear of the bearing. Grease the bearings on the Auger once per month. Grease the three ball bearings with 1-2 pumps and the one roller bearing with 2-3 pumps. The ball bearings are both on the Horizontal portion and the top bearing on the Vertical section. The roller bearing is bottom bearing on the Vertical section. Note that a small amount of grease at frequent intervals is preferable to a large amount at infrequent intervals.

Note: Bearings from RMS come greased and ready for operation. Bearings directly from the manufacturer should be greased to purge.

Note: RMS suggests any lithium-based NLGI #2 grease such as “Feedmillube” which can be purchased through RMS or online at Feedmillube.com



Belt Tension:

Belts stretch over their lifespan and thus should be checked periodically for proper tension. May need to be adjusted to prevent them from slipping during operation of the Auger.



Belt Tension:

- 1) To maximize v-belt life and optimize your machine's performance make sure the proper belt tension is maintained.
- 2) V-Belts should be tensioned only as tight as required to prevent belts from slipping. If the belts start to slip, simply tension more. But DO NOT over tighten the belts!
- 3) If the belts are over tensioned, it may result in motor failure.

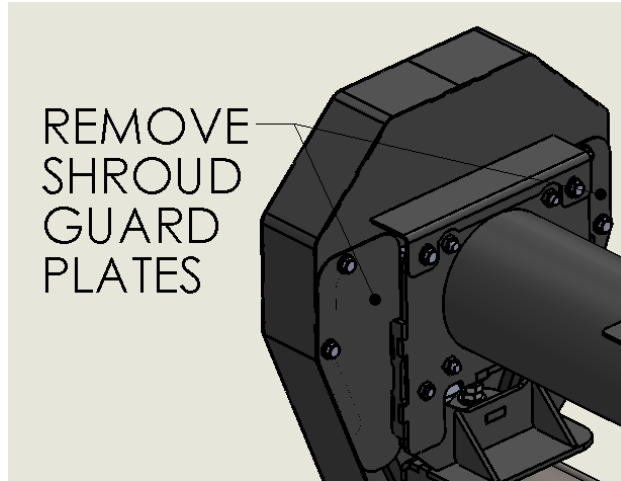
Warning: Never remove belt guards when machine is operating!



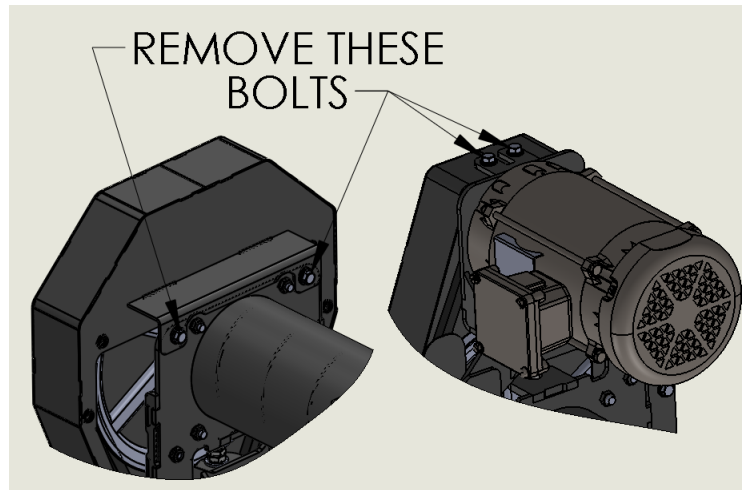
Belt Tension cont'd:

Adjusting Belt Tension:

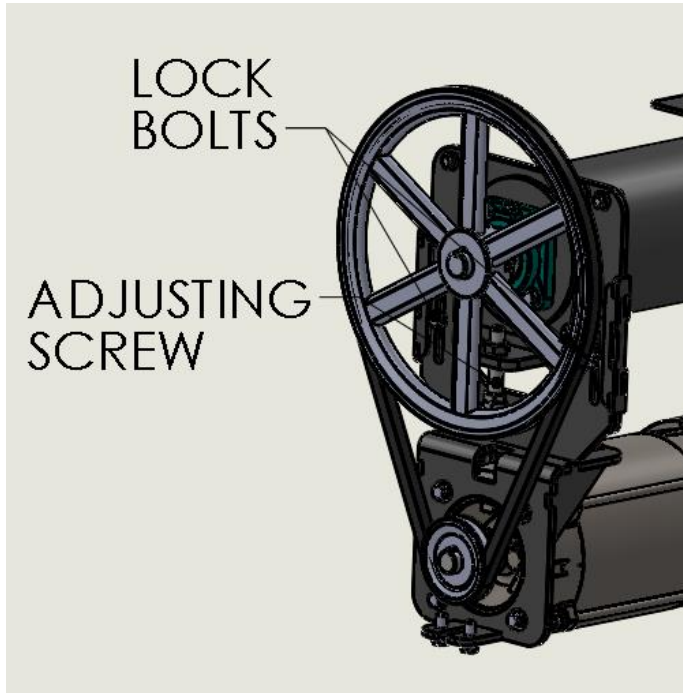
- 1) Before adjusting belt tension, the Shroud around the belts will need to be removed. First remove the shroud guard plates.



- 2) Next remove the Shroud itself by removing the two bolts on the back and also the two bolts on the bottom of the shroud.



- 3) Once Shroud has been removed, loosen two lock bolts which will allow you to adjust belt tension. Turn Adjusting screw counter-clockwise to increase tension and clockwise to decrease tension. Once desired tension has been achieved tighten lock bolts and reassemble shroud and guard plates.



Electrical Instructions:

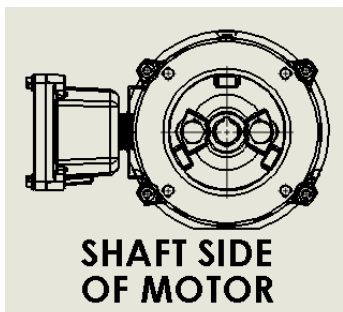
RMS strongly suggests you hire a licensed electrician for the initial install of the electrical components.

For additional wiring information, consult the wiring legend on the motor as in the photo below.



Motor/Auger Rotation

Both the Horizontal portion and Vertical portion need to spin counter-clockwise. This means the motor for the Horizontal Auger needs to spin counter-clockwise and the motor for the Vertical Auger needs to spin clockwise. Both of these directions are determined when looking at the shaft side of the motor. (See image below).



Important:

Check and clean motors at least monthly to ensure they are free from contaminants. This ensures the motors are able to adequately cool themselves and avoid overheating.

To avoid serious injury: Always complete this task when all power sources to each motor have been disabled and motors have cooled down!



Interlocking:

Interlocking the electrical components on a roller grinder is one of the most important steps when installing a machine. You must interlock the main grinding motors to the downstream take away equipment. In this case the Vertical Auger to prevent it from starting if the Auger is not energized. This is critical to ensure that the roller grinder shuts off if the one of the components downstream stops running for any reason.

Parts and Service:

Replacement Parts:

Bearings

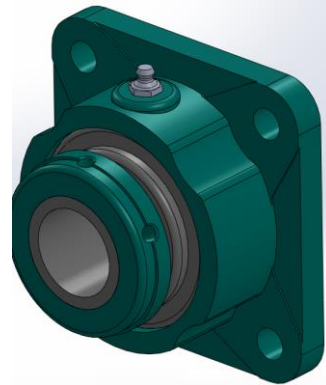
- 3 - 4-Bolt Flange 1" Set Screw Ball Bearings
- 1 - 4-Bolt Flange 1-3/8" Roller Bearings

Belts

- 2 - A47 Belts
- 1 - A50 Belt

Motor

- 1-1HP 1800 RPM C-Face 3-Phase TEFC or XP motor
- 1-2HP 1800 RPM C-Face 3-Phase TEFC or XP motor



RMS uses Baldor motors and can help to determine if there is a warranty issue if the motor should fail.

RMS carries all replacement parts and can bill and ship to you directly. Call our service department at 605-368-9007 to order parts or inquire on warranties.

Emergency Contact Information

Name:	Cell phone:	Email:
Alex Pearson	605.941.1901	Alex@rmsroller-grinder.com
Jaki Hofer	605.940.0168	JakiH@rmsroller-grinder.com
Blake Sandnes	605.940.5087	BlakeS@rmsroller-grinder.com
Nhavottaë Smith	605.214.8290	NhavottaëS@rmsroller-grinder.com

Office:

605.368.9007

Toll Free:

888.283.9337

Website: www.rmsroller-grinder.com

