



**Modern Process Equipment Inc.**

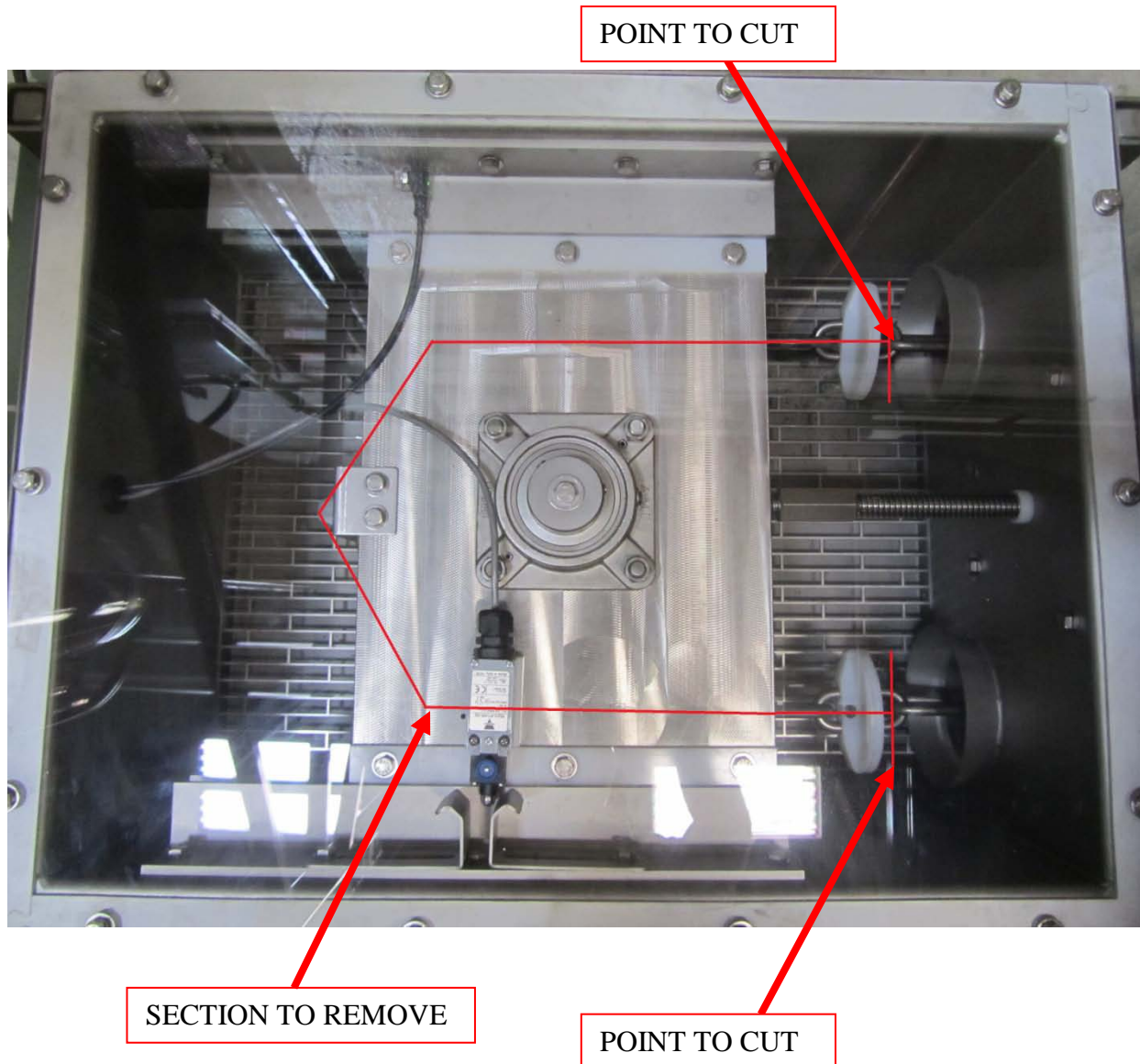
3125 S. Kolin Ave.

Chicago, IL 60623

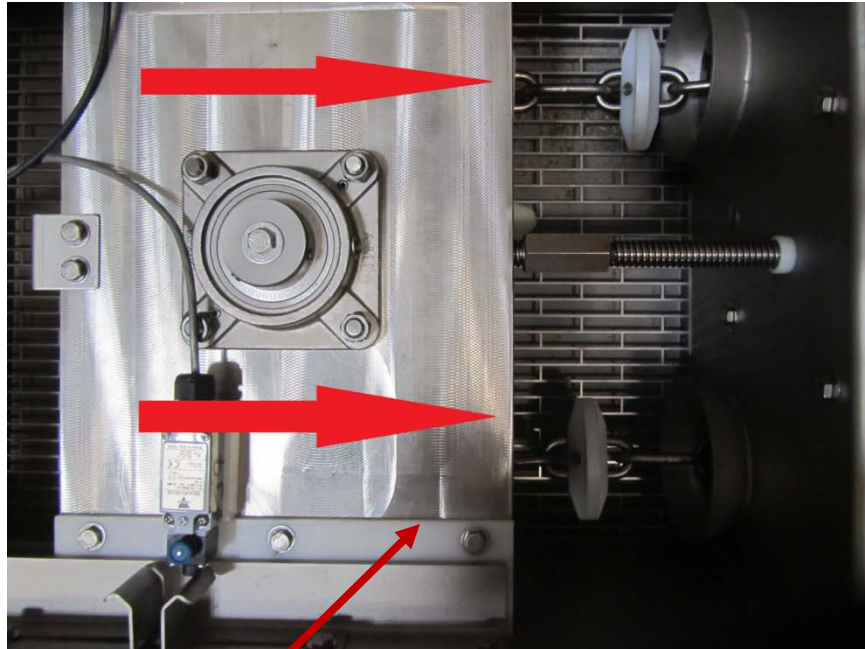
Tel 773.254.3929 Fax 773.254.3935

## Chain Replacement Procedure

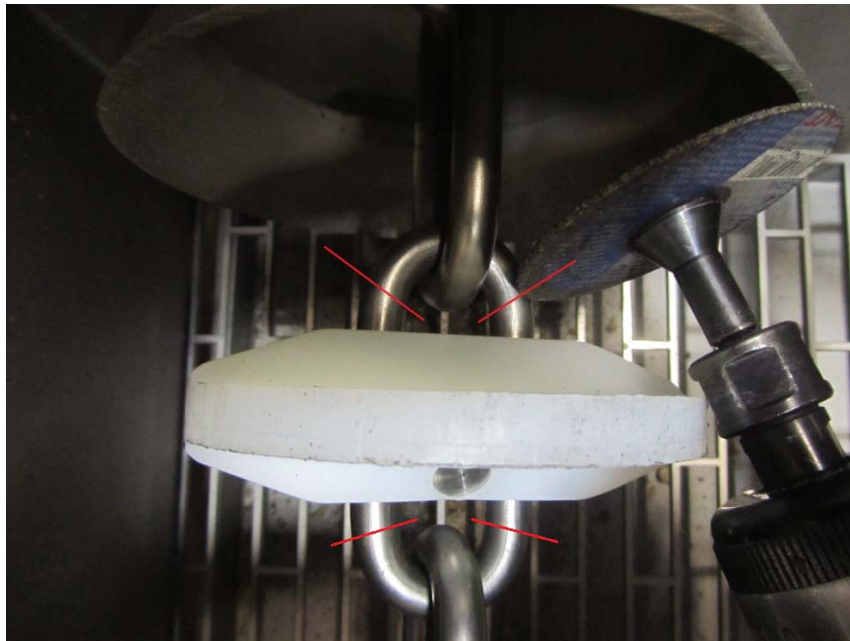
1. Determine the length of the chain that needs to be replaced and bring that length within the turnaround (if the damaged chain is longer, bring the beginning of the damaged chain into the turnaround)



2. Lockout the motor, remove the cover of the turnaround, and loosen the tension. Cut and remove the damaged chain. This must be done on a chain link where a disk is present

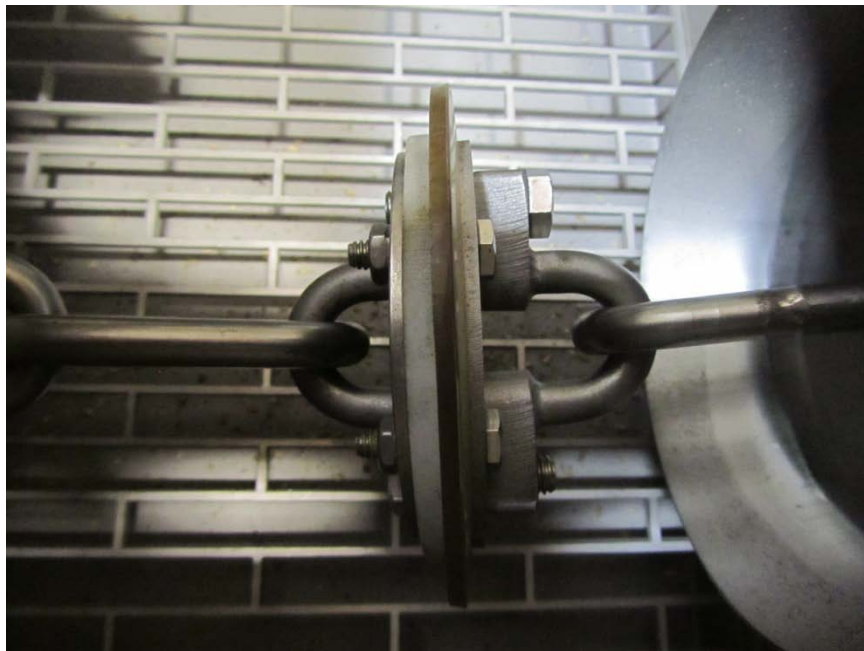


PUSH PLATE FORWARD TO RELEASE TENSION



3. Cut the chain link as indicated above. The link can be cut with die cutter as shown, or with a bolt cutter or other.

4. Install a new connector link at the end of the cut section.



5. If the other end of the damaged chain is not within the turnaround, manually use the motor to feed the replacement chain in while removing the damaged chain until the end is seen and can be cut
6. Once the next end is accessible, install an additional connector link as done in step 4.