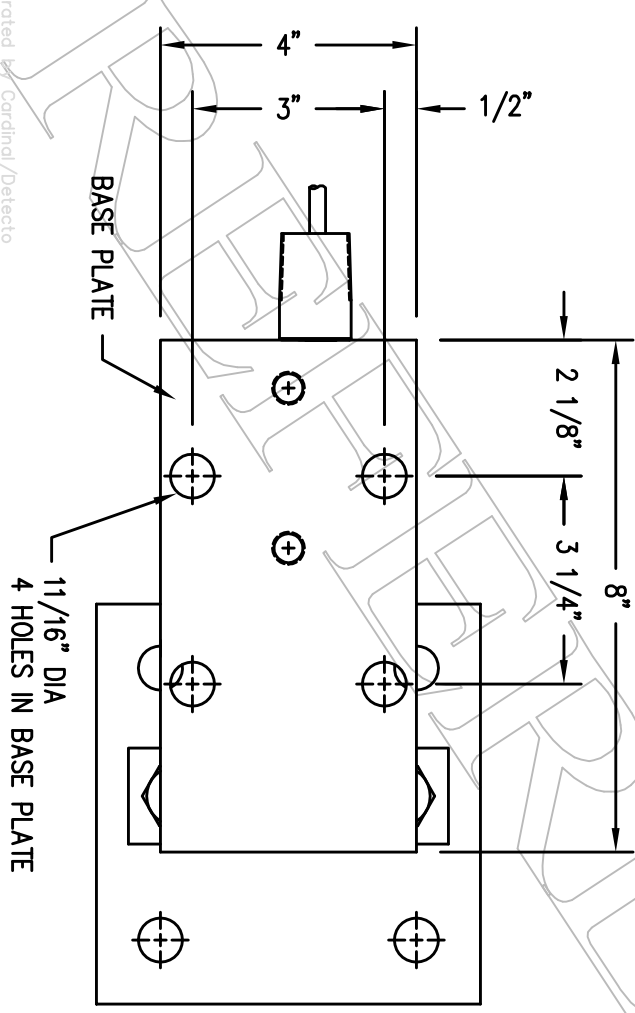
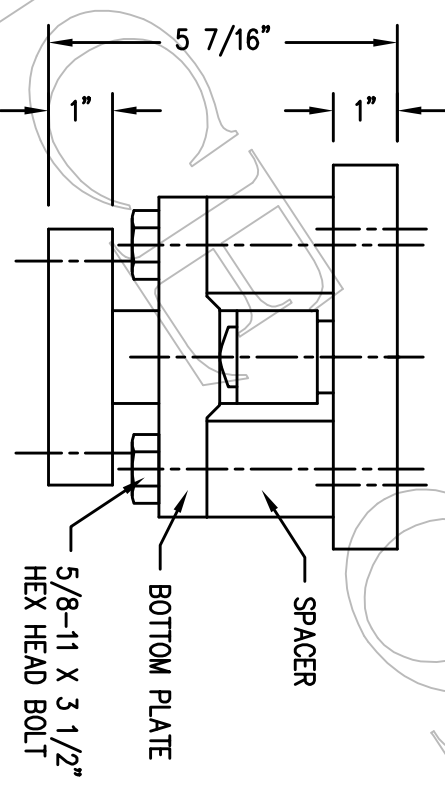
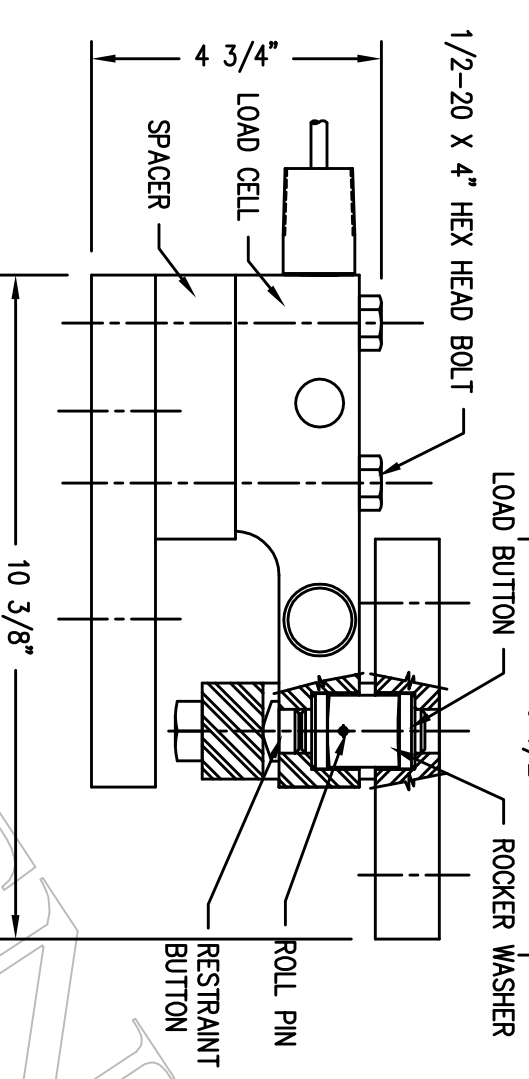
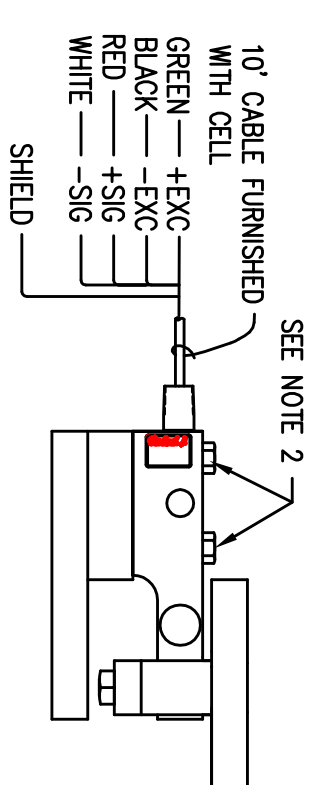
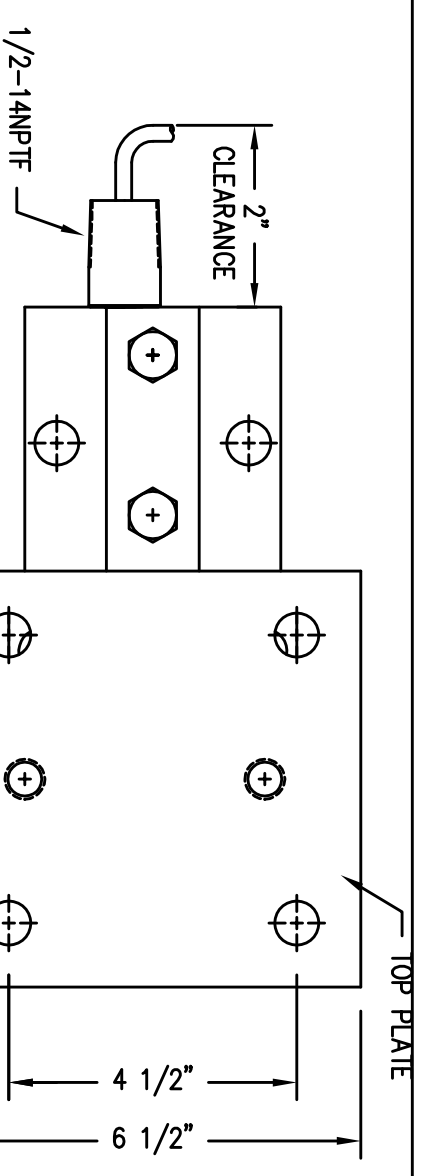


REVISION RECORD			
LTR	DESCRIPTION	DATE	BY
A	REF: PRD DWG #3500-0295-0A	6/27/17	28269 CM



- NOTES:**
1. POSITION ROCKER WASHER INTO LOAD CELL, PASS ROLL PINS THROUGH EACH SIDE OF THE LOAD CELL AND PRESS FIT INTO ROCKER WASHER UNTIL APPROXIMATELY 1/8" PROTRUDES FROM ROCKER WASHER, TYPICAL 2 PLACES.
 2. POSITION THE LOAD CELL ALONG WITH THE BASE PLATE AND SPACER AS SHOWN. FASTEN IN PLACE USING THE 1/2-20 X 4" HEX HEAD BOLTS. APPLY 100 ft/lb OF TORQUE TO THE BOLTS DURING ASSEMBLY, TYPICAL 2 PLACES.
 3. THE PURCHASERS OF FLOOR STAND TANK SCALES ARE ADVISED TO INSTALL SAFETY STAY RODS TO PREVENT TIPPING OF THE TANK. CARDINAL SCALE MFG. CO. WILL NOT BE RESPONSIBLE FOR THE STABILITY OF THE TANK.
 4. USE BOTTOM PLATE IN THE POSITION SHOWN FOR USE WITH THE 2,500 lb LOAD CELL AND TURN IT UPSIDE DOWN FOR USE WITH THE 5,000 lb LOAD CELL.

QTY.	QTY.	QTY.	ITEM	PART/DWG. NUMBER	DESCRIPTION	MATERIAL OR SOURCE	WT. EACH
			ASSY				
			WT.				

PARTS/MATERIAL LIST

UNLESS OTHERWISE SPECIFIED TOLERANCE ON DIMENSIONS ARE:
 ANGLES ± 1/2°
 INTEGERS/FRACTIONS ± 1/16 IN.
 DECIMALS (.X) ± .03 IN.
 DECIMALS (.XX) ± .01 IN.
 DECIMALS (.XXX) ± .005 IN.
 NOTE: WHOLE NUMBERS MUST BE WRITTEN XX.000 TO INVOKE DECIMAL TOLERANCES.

THIS DRAWING IS THE PROPERTY OF THE CARDINAL SCALE MFG. CO. AND SHALL NOT BE USED NOR REPRODUCED EITHER WHOLLY OR IN PART EXCEPT WITH WRITTEN AUTHORIZATION. ALL RIGHTS OF DESIGN OR INVENTION ARE RESERVED.



Cardinal

 CARDINAL DETECTO FULLER WEIGHING SYSTEMS

TITLE: **OUTLINE DRAWING, THBC2.5-4RMS**

SCALE	N.T.S.	DO NOT SCALE DRAWING	NEXT ASSEMBLY	CUSTOMER DRAWING
DR. C. MOORE	DATE	6/27/17	B	ENGLISH
CH.	DATE			
MODEL	THBC2.5-4RMS	SHEET	1 OF 1	REV. M
DWG. NO.	3500-0296-0A			