

BALDOR® • RELIANCE 

Ensemble d'infos pièce

36L827R947G1

2.2KW,1760RPM,3PH,60HZ,E100D,3632M,XPFC

Détail pièce							
Révision:	A	Statut:	PRD/A	No de changement:		Propriétaire:	Non
Type:	AC	Spéc. élec.:	36WGR947	Diagramme CD:	CD0005	Usine de fab.:	
Spéc. méc.:	36L827	Config:	36LYL827	Pôles:	04	Date créée:	08-25-2017
Base:	N	Date entrée vig.:	03-19-2018	Conducteurs:	9#16		

Specs			
Enclosure:	XPFC	KVA Code:	K
Frame:	E100D	Lifting Lugs:	No Lifting Lugs
Frame Material:	Steel	Locked Bearing Indicator:	Locked Bearing
Output @ Frequency:	2.200 KW @ 60 HZ	Motor Lead Quantity/Wire Size:	9 @ 16 AWG
Synchronous Speed @ Frequency:	1800 RPM @ 60 HZ	Motor Lead Exit:	Ko Box
Voltage @ Frequency:	230.0 V @ 60 HZ	Motor Lead Termination:	Flying Leads
	460.0 V @ 60 HZ	Motor Type:	3632M
XP Class and Group:	CLI GP C,D; CLII GP F,G	Mounting Arrangement:	B5
XP Division:	Not Applicable	Power Factor:	75
Auxillary Box:	No Auxillary Box	Product Family:	General Purpose
Auxillary Box Lead Termination:	None	Pulley End Bearing Type:	Ball
Base Indicator:	No Mounting	Pulley Face Code:	D-Flange
Bearing Grease Type:	Polyrex EM (-20F +300F)	Pulley Shaft Indicator:	Standard
Blower:	None	Rodent Screen:	None
Current @ Voltage:	4.200 A @ 460.0 V	RoHS Status:	ROHS COMPLIANT
	8.400 A @ 230.0 V	Shaft Extension Location:	Pulley End
Design Code:	B	Shaft Ground Indicator:	No Shaft Grounding
Drip Cover:	No Drip Cover	Shaft Rotation:	Reversible

Duty Rating:	CONT	Shaft Slinger Indicator:	No Slinger
Electrically Isolated Bearing:	Not Electrically Isolated	Speed Code:	Single Speed
Feedback Device:	NO FEEDBACK	Motor Standards:	IEC
Frame Prefix:	E	Starting Method:	Direct on line
Front Face Code:	Standard	Thermal Device - Bearing:	None
Front Shaft Indicator:	None	Thermal Device - Winding:	Normally Closed Thermostat
Heater Indicator:	No Heater	Vibration Sensor Indicator:	No Vibration Sensor
Insulation Class:	B	Winding Thermal 1:	None
Inverter Code:	Inverter Ready	Winding Thermal 2:	None
		XP Temp Code:	T3C

Plaque signalétique NP0978XPSLEV										
NO.						CC	010A			
SER.							TEMP CODE	T3C		
SPEC.	36L827R947G1									
CAT.NO.										
HP	2.2KW									
VOLTS	230/460									
AMPS	8.4/4.2									
RPM	1760					MOTOR WEIGHT	102			
HERTZ	60	PH	3	CL	B	DE BRG	6206			
SER.F.	1.00	DES	B	CODE	K	ODE BRG	6205			
FRAME	E100D		GREASE	POLYREX EM						
RATING	40C AMB-CONT									
USABLE AT 208V						NEMA-NOM-EFF	89.5		PF	75

Liste des pièces		
Référence	Description	Quantité
SA343842	SA 36L827R947G1	1.000 EA
RA332312	RA 36L827R947G1	1.000 EA
36FN3000C01SP	EXFN, PLASTIC, 5.25 OD, .912 ID	1.000 EA
37CB1005A02	CONDUIT BOX-MACH-EXPL.PROOF-GROUP "C" MTR	1.000 EA
11XW1032G06	10-32 X .38, TAPTITE II, HEX WSHR SLTD U	1.000 EA
HW3001B01	BRASS CUP WASHER, FOR #10 SCREW	1.000 EA
36EP1719A05	SPECIAL FRONT ENDPLATE X06M - XPFC	1.000 EA
HW4500A19	1/4-28X1/4 SLOTTED PLUG F/S	2.000 EA
HW5100A05	WVY WSHR F/205 & 304 BRGS	1.000 EA
06EP1708A03	PUEP XP 182-4C 206 BRG GRP-C	1.000 EA
51XN1032A18	10-32 X 1 1/8 HX WS SL SR (ESKAY)	2.000 EA
HW4001A01	1/4 HX SOC PIPE PLG (F/S) ALLOY STEEL W/	2.000 EA
60XN1032A07	10-32 X .4375 TRUSS HEAD, TORX SERRATED	2.000 EA
XY3816A12	3/8-16 FINISHED NUT	4.000 EA
51XB1214A16	12-14X1.00 HXWSSLD SERTYB	1.000 EA
36FH3003A03	FAN COVER EXPLOSION PROOF F2 MTG	1.000 EA
12XF1032A08	10-32X1/2 TY F HEX X	4.000 EA
HA6304A01	ADAPTER FLANGE, MACH	1.000 EA
84XN3816J38	3/8-16X2-3/8 SOCK HD, BK OX	4.000 EA
HW1001A38	LOCKWASHER 3/8, ZINC PLT .688 OD, .382 I	4.000 EA
37CB1502A01	CONDUIT BOX LID-MACH-EXPL.PROOF-GROUP "C	1.000 EA
RM1020A42	O-RING, -154 BUNA-N, .103 CS X 3.737 ID	1.000 EA
HW2505A14	KEY, 8 X 7 MM 1.50 INCHES	1.000 EA
HA7000A02	KEY RETAINER RING, 1 1/8 DIA, 1 3/8 DIA	1.000 EA

Liste des pièces (suite)		
Référence	Description	Quantité
85XU0407S04	4X1/4 U DRIVE PIN STAINLESS	6.000 EA
LB1359F	ALUM XP CAUTION LABEL	1.000 EA
MJ1000A02	GREASE, POLYREX EM EXXON (USe 4824-15A)	0.050 LB
MG1025G29	WILKOFAS, 789.229, DARK CHARCOAL GRAY	0.022 GA
HA3105A09	THRUBOLT 3/8-16 X 12.000	4.000 EA
LB1119N	WARNING LABEL	1.000 EA
LB1417	LABEL CARTON 6X4 PERFORATED BLANK ROLLS	1.000 EA
LC0145B01	CONNECTION LABEL	1.000 EA
NP0978XPSLEV	SS XP UL CSA-EEV CC CL-I GP-C&D	1.000 EA
PK3082	STYROFOAM CRADLE	1.000 EA
G0PA1000	PKG GRP, PRINT PK1026A06	1.000 EA
MN416A01	TAG-INSTAL-MAINT no wire (1200/bx) 5/18	1.000 EA

AC Induction Motor Performance Data

Record # 66537 - Typical performance - not guaranteed values

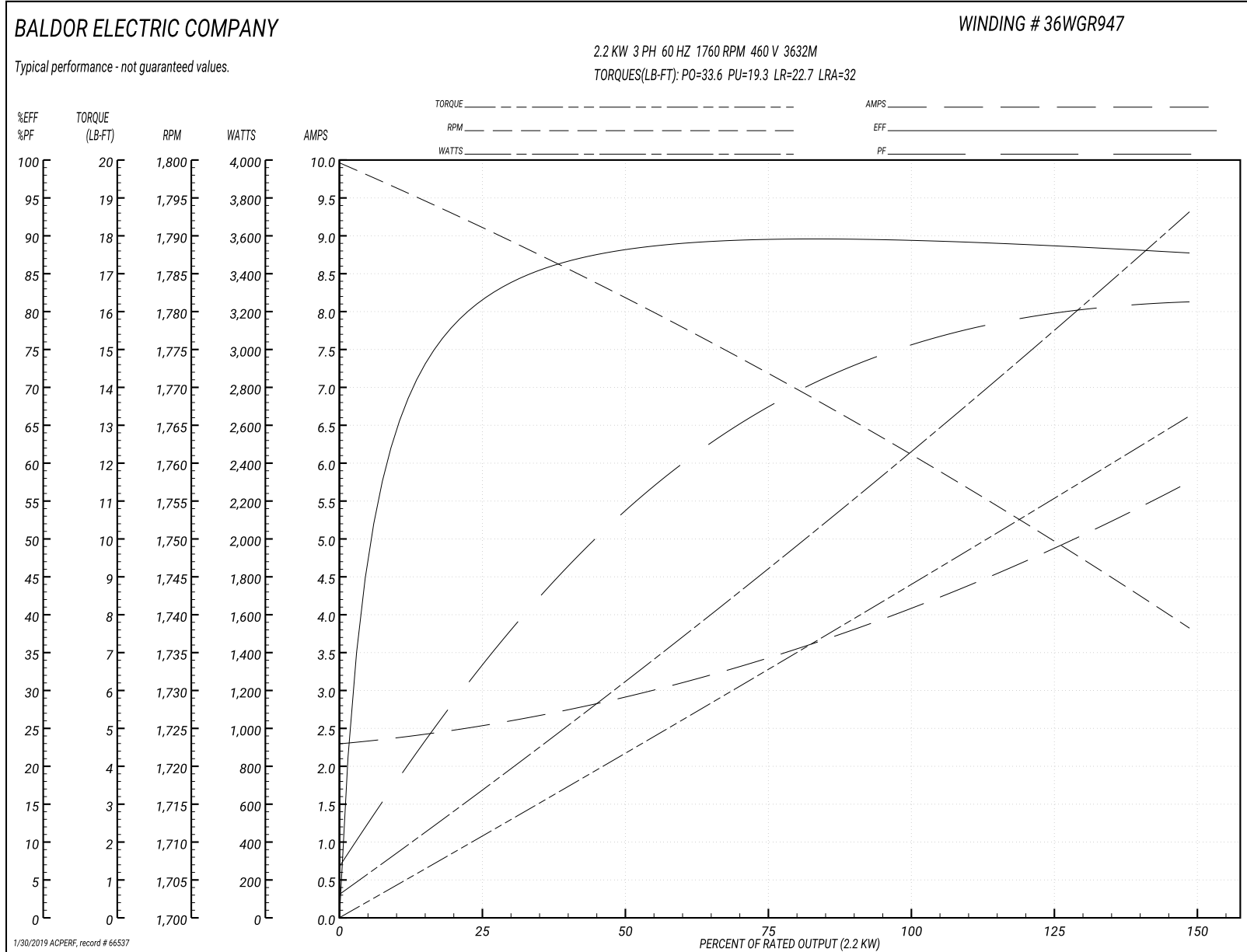
Winding: 36WGR947-R034	Type: 3632M	Enclosure: XPFC
-------------------------------	--------------------	------------------------

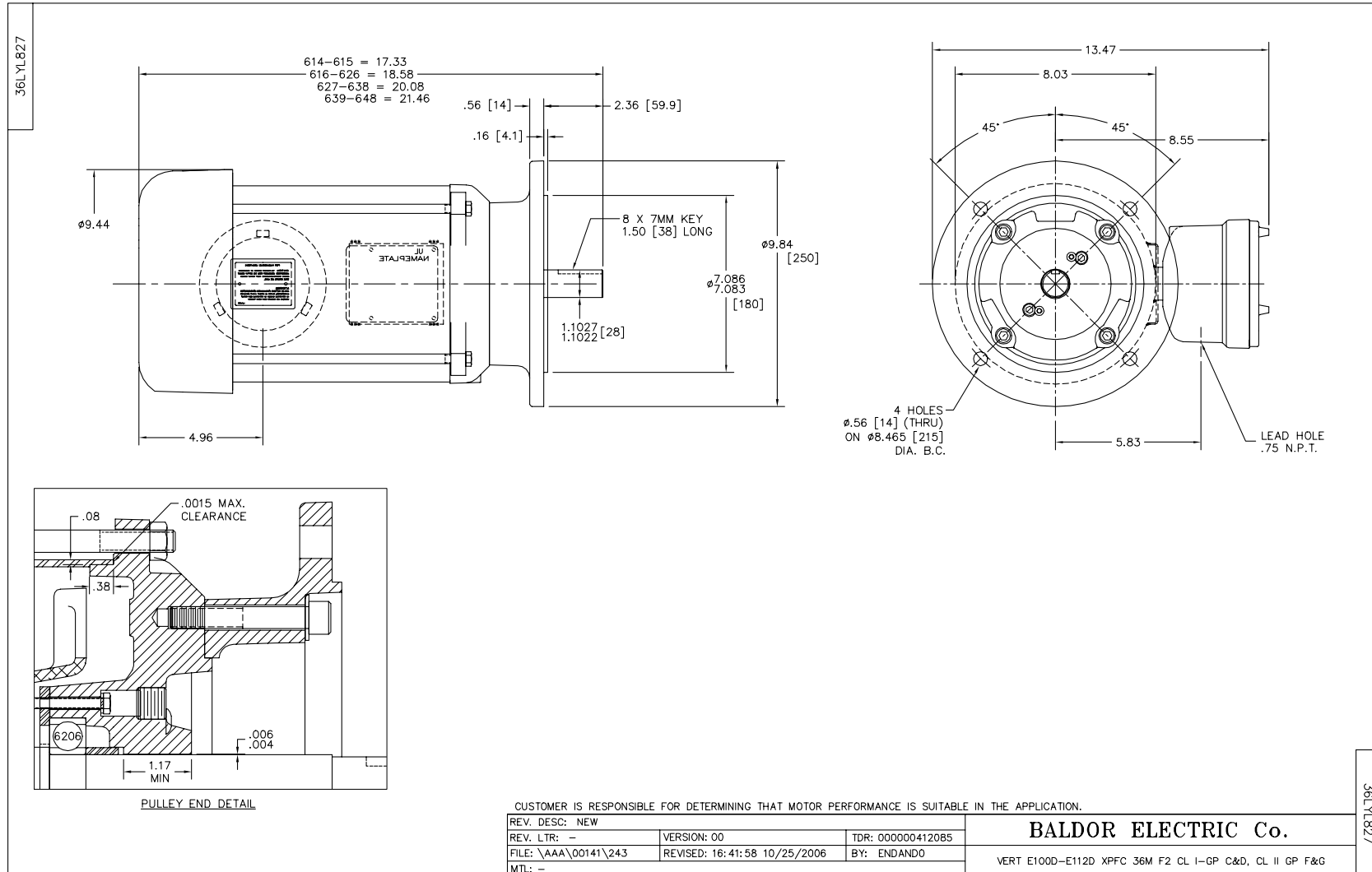
Nameplate Data				460 V, 60 Hz: High Voltage Connection	
Rated Output (KW)	2.2			Full Load Torque	8.74 LB-FT
Volts	230/460			Start Configuration	direct on line
Full Load Amps	8.4/4.2			Breakdown Torque	33.6 LB-FT
R.P.M.	1760			Pull-up Torque	19.3 LB-FT
Hz	60	Phase	3	Locked-rotor Torque	22.7 LB-FT
NEMA Design Code	B	KVA Code	K	Starting Current	32 A
Service Factor (S.F.)	1			No-load Current	2.33 A
NEMA Nom. Eff.	89.5	Power Factor	75	Line-line Res. @ 25°C	3.81 Ω
Rating - Duty	40C AMB-CONT			Temp. Rise @ Rated Load	39°C
				Locked-rotor Power Factor	42.2
				Rotor inertia	0.298 LB-FT ²

Load Characteristics 460 V, 60 Hz, 2.2 KW

% of Rated Load	25	50	75	100	125	150
Power Factor	33	54	67	75	79	82
Efficiency	80.4	87.7	89.5	89.6	88.8	87.6
Speed	1791	1782	1772	1762	1750	1738
Line amperes	2.49	2.87	3.4	4.11	4.89	5.72

Graphe de performance à 460V, 60Hz, 2.2KW Performance caractéristique - pas de valeurs garanties





CD0005

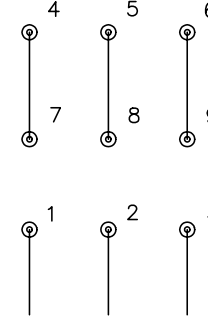


LOW VOLTAGE
(2Y)



LINE

HIGH VOLTAGE
(1Y)



LINE

NOTES:

1. INTERCHANGE ANY TWO LINE LEADS TO REVERSE ROTATION.
2. OPTIONAL THERMOSTATS ARE PROVIDED WHEN SPECIFIED.
3. ACTUAL NUMBER OF INTERNAL PARALLEL CIRCUITS MAY BE A MULTIPLE OF THOSE SHOWN ABOVE.
4. LEAD COLORS ARE OPTIONAL. LEADS MUST ALWAYS BE NUMBERED AS SHOWN.

REV. DESC: REVISE TO SHOW OPTIONAL COLORS

REV. LTR: E BY: JLP

REVISED: 01/19/99 10:15

TDR: 0171435

90000

FILE: AAA00005140

MDL: -

MTL: -

BALDOR ELECTRIC Co.

3PH, DV, 9 LEADS

CD0005