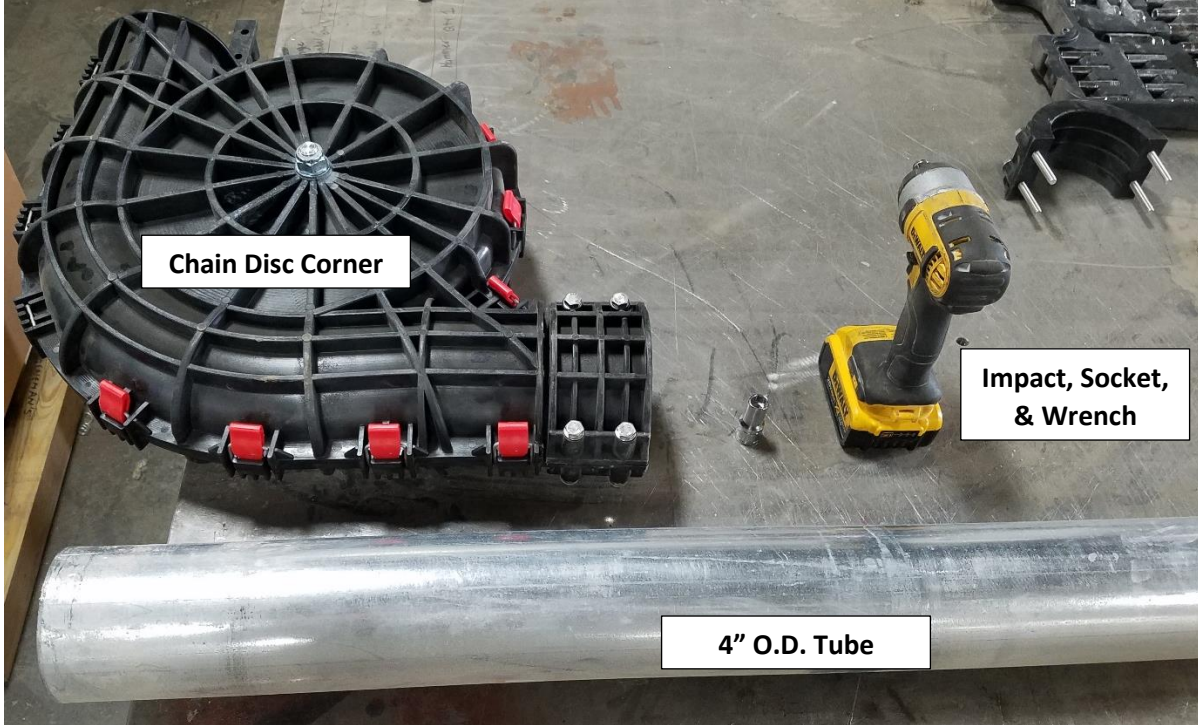


Chain Disc - Single Point Lesson

Recommended Tools & Materials

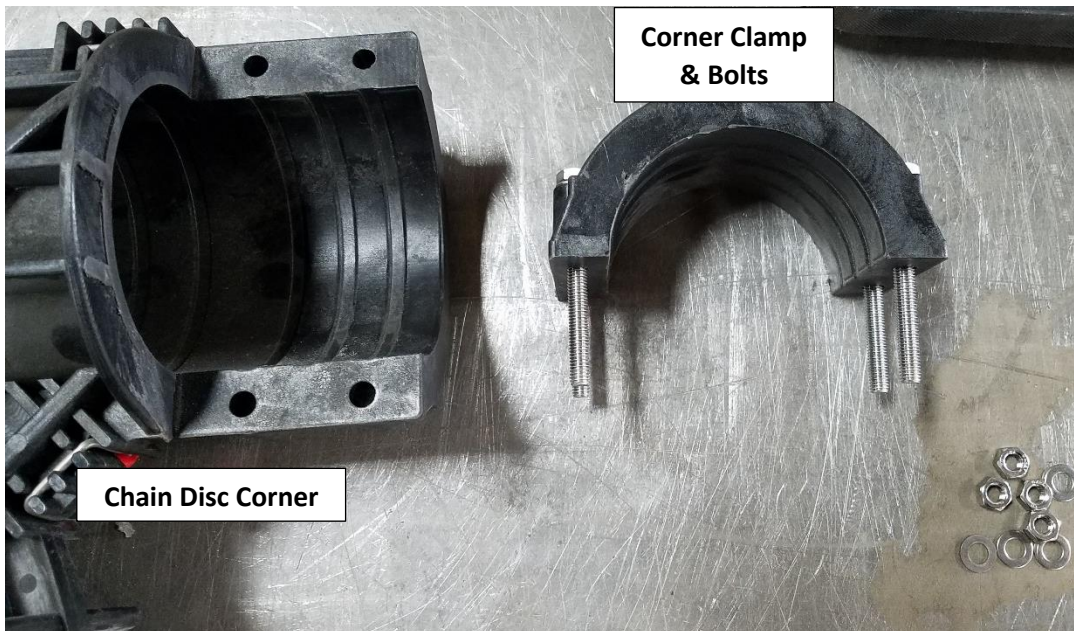
- Impact Wrench
- 9/16" Socket
- 9/16" Wrench
- 7/8" Wrench or Socket
- 7/16" Socket
- 7/16" Wrench
- 2" Wide Aluminum Duct Tape
- Electrical Fish Tape – to Pull Chain Disc
- Masking Tape
- Vice Grip
- Angle Grinder With Cutting Wheel
- Ladder
- Fastening Equipment to Ceiling (Clamps, Anchor Bolts, ext.)

How to Install the Tube to Chain Disc Corner



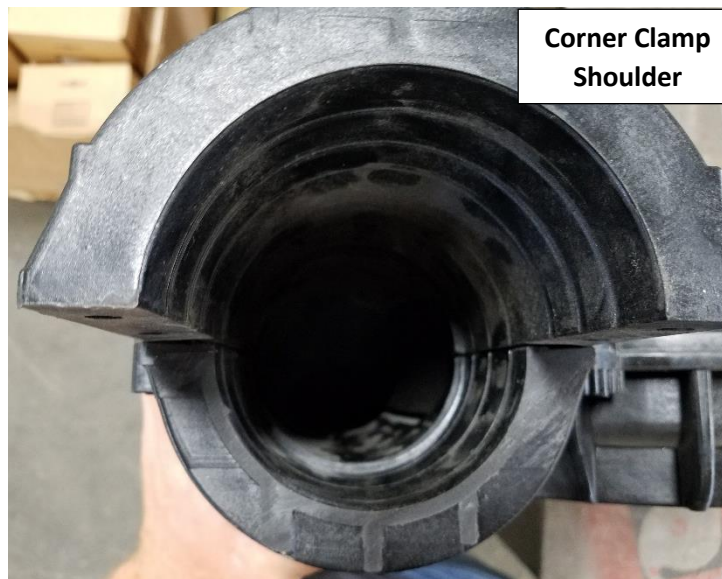
Step 1.

- Remove Corner Clamp



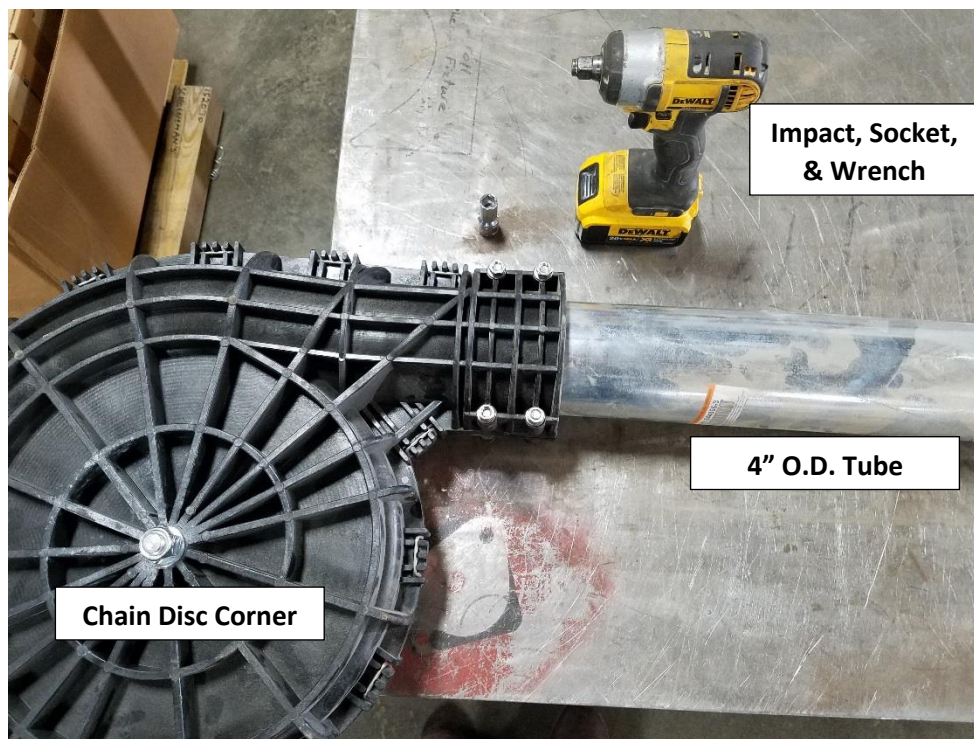
Step 2.

- Insert 4" O.D. Tube in Corner Till it Bottoms Out on Corner Shoulder

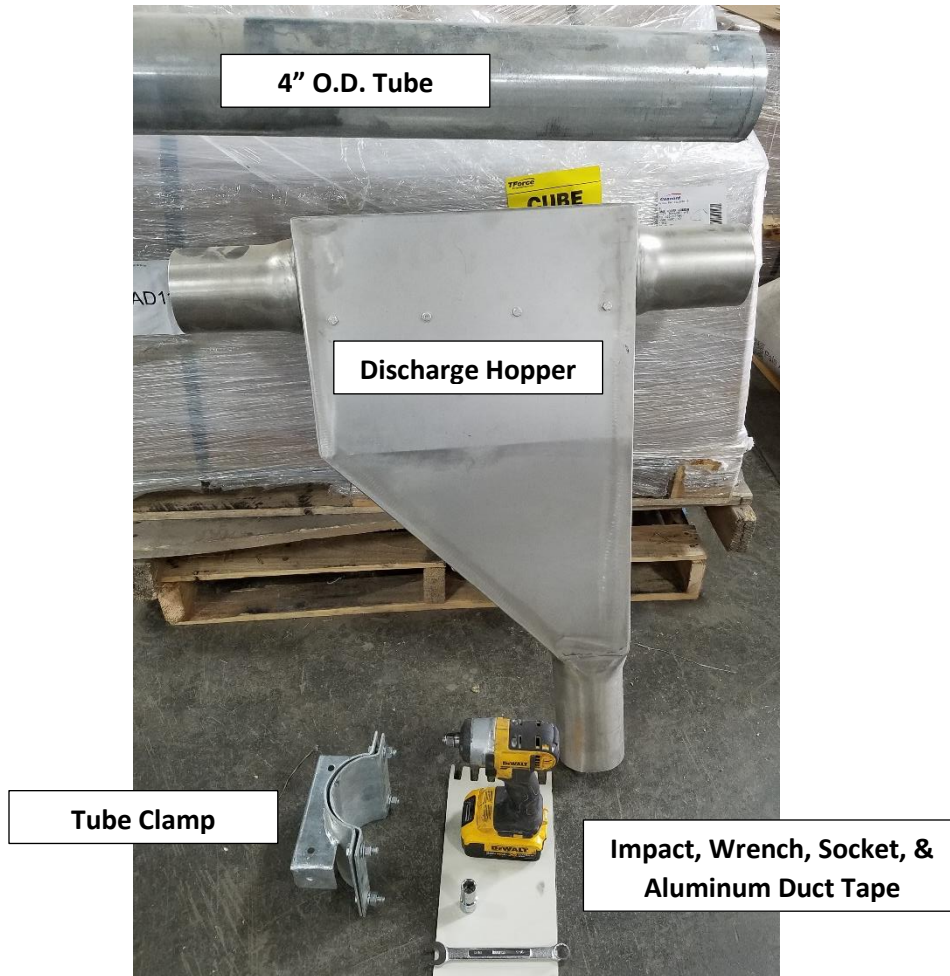


Step 3.

- Re-attach Corner Clamp and Tighten Bolt

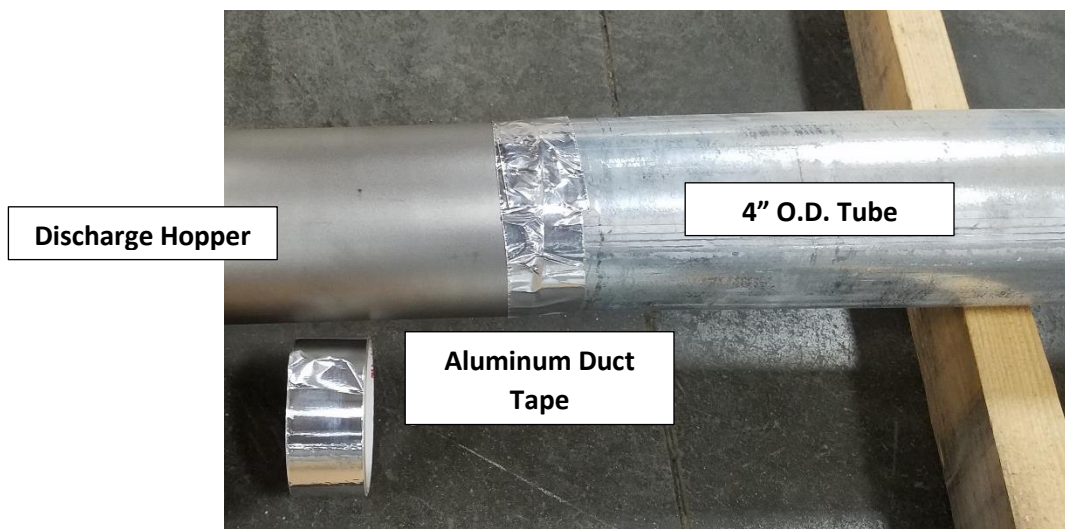


How to Install the Tube to Discharge Hopper



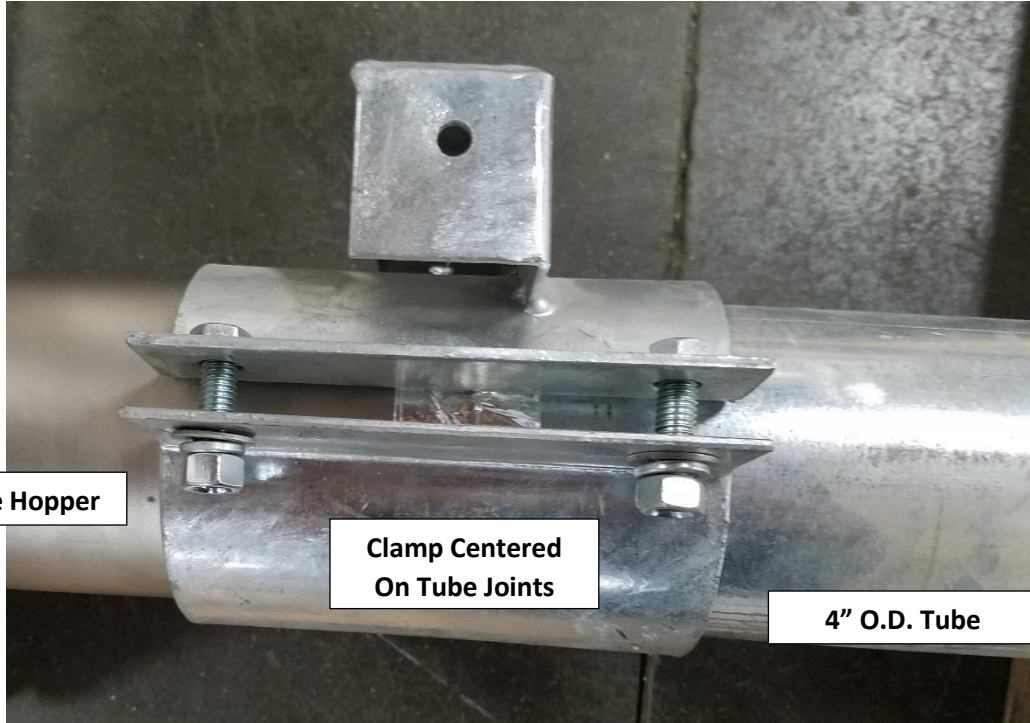
Step 1.

- Butt 4" O.D. Tube Up to Discharge Hopper Tube and Apply Aluminum Duct Tape

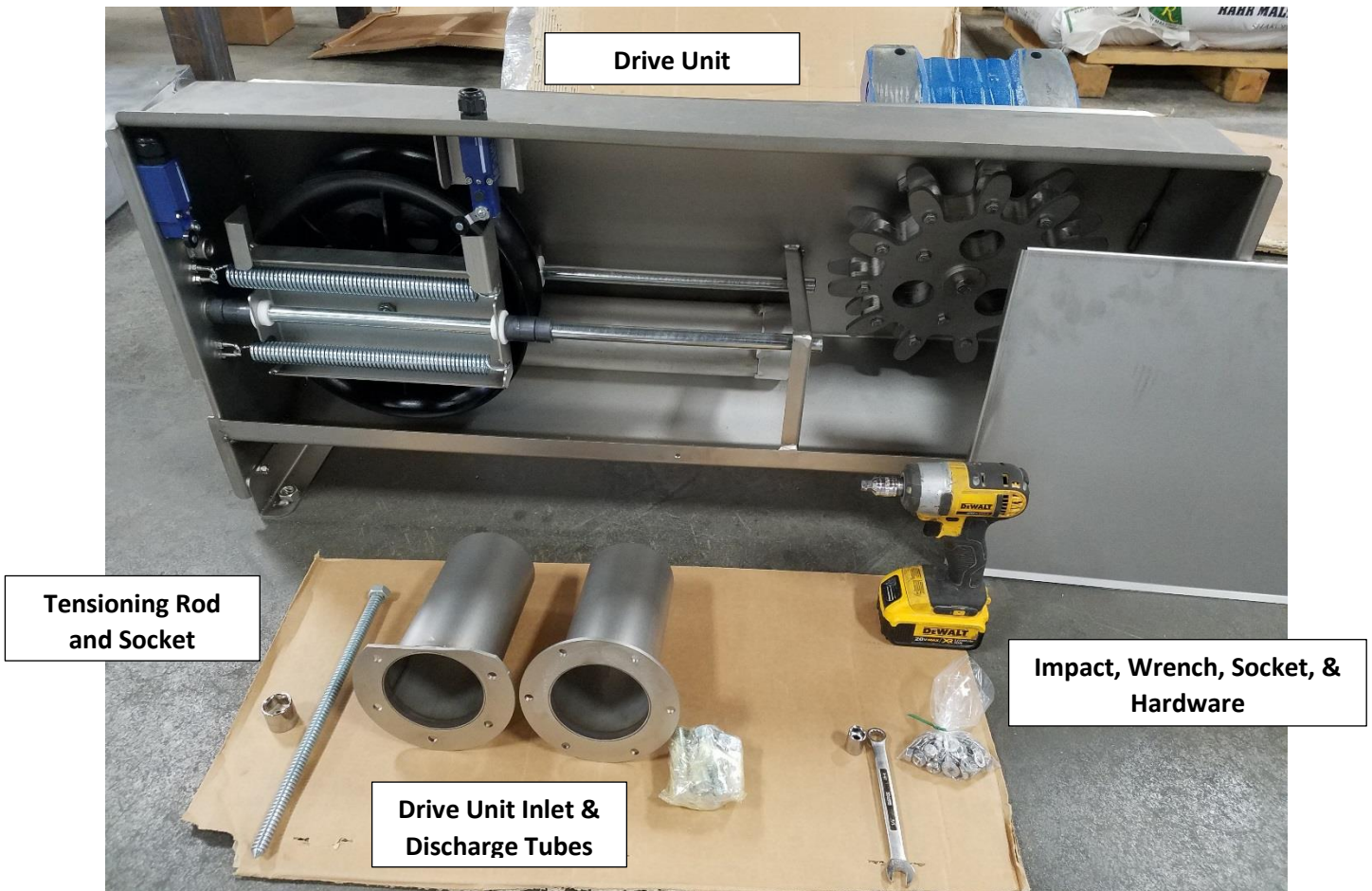


Step 2.

- Attach Tube Clamp So The Center Of The Joint Is In The Middle Of The Clamp And Then Tight Bolts

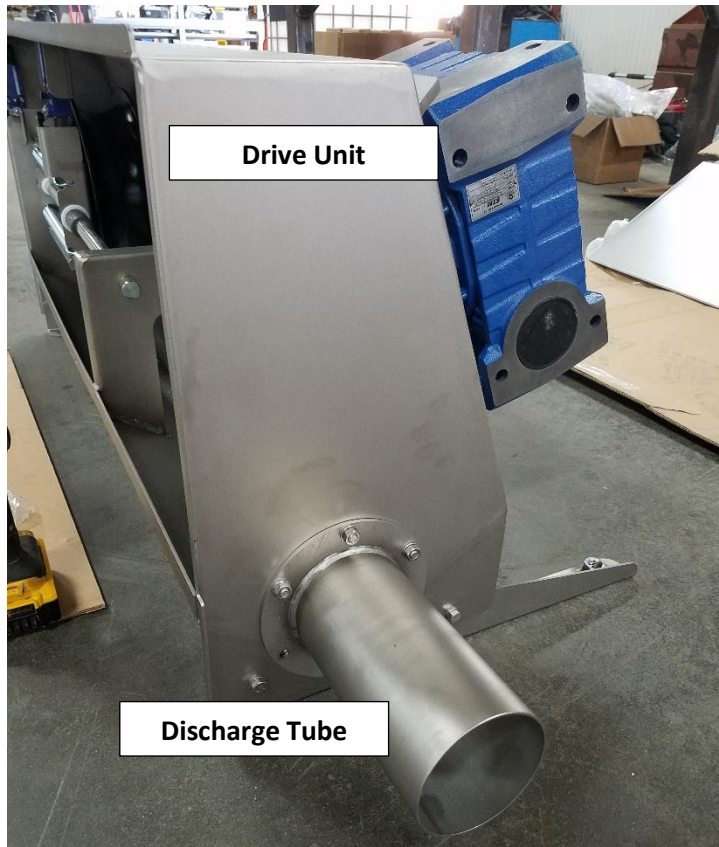
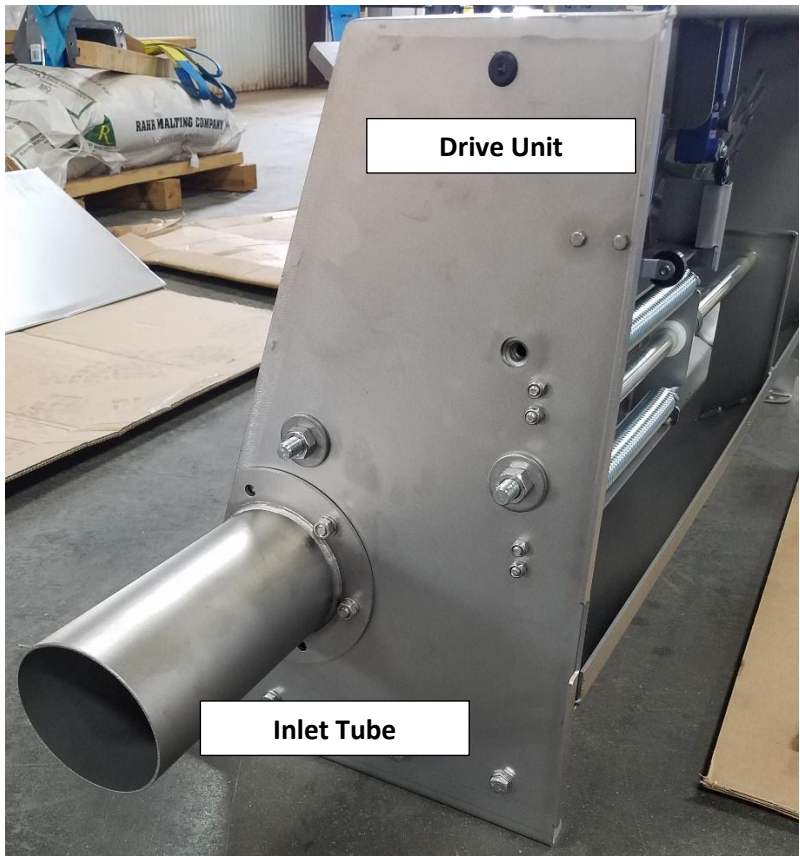


How to Assembly Drive Unit



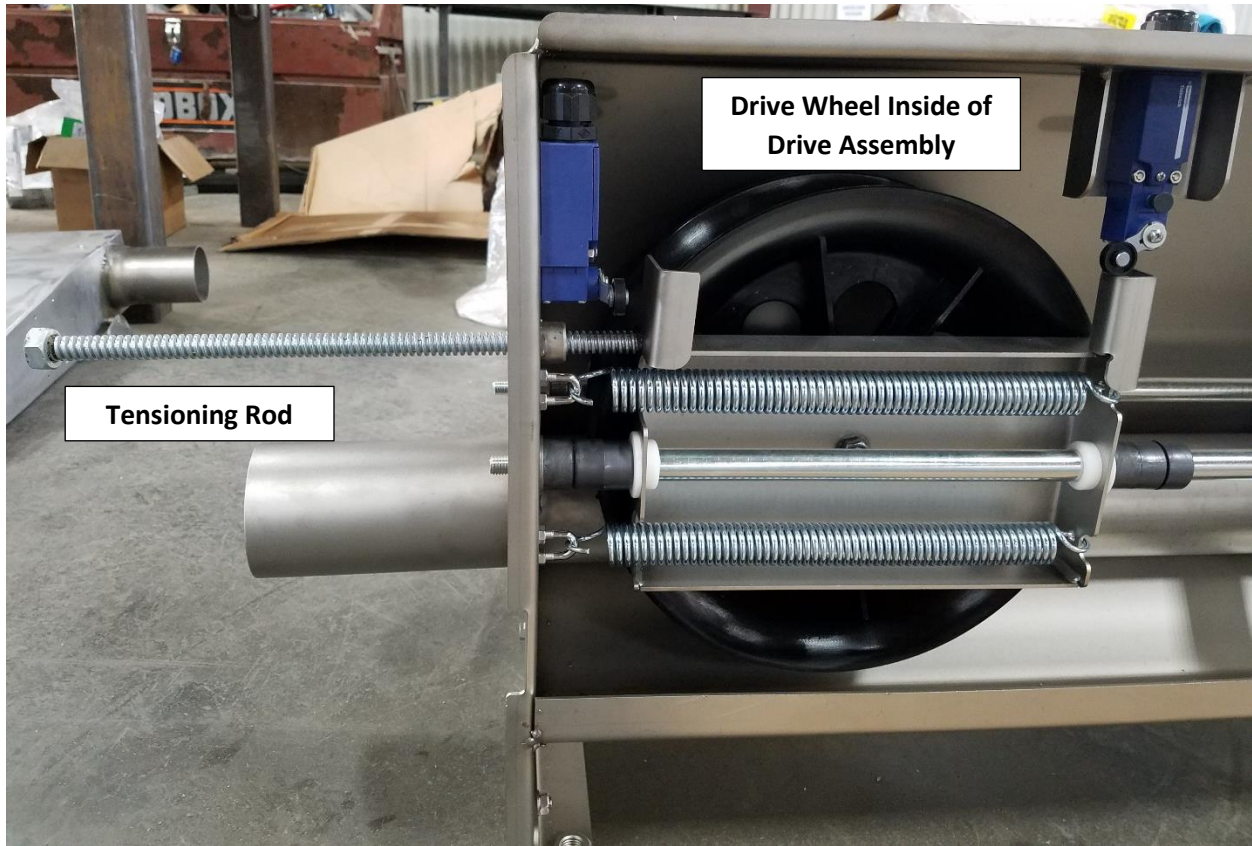
Step 1.

- Attach Inlet and Discharge Tube to Drive Unit with Hardware. ****Note Different Tubes for Inlet and Discharge****

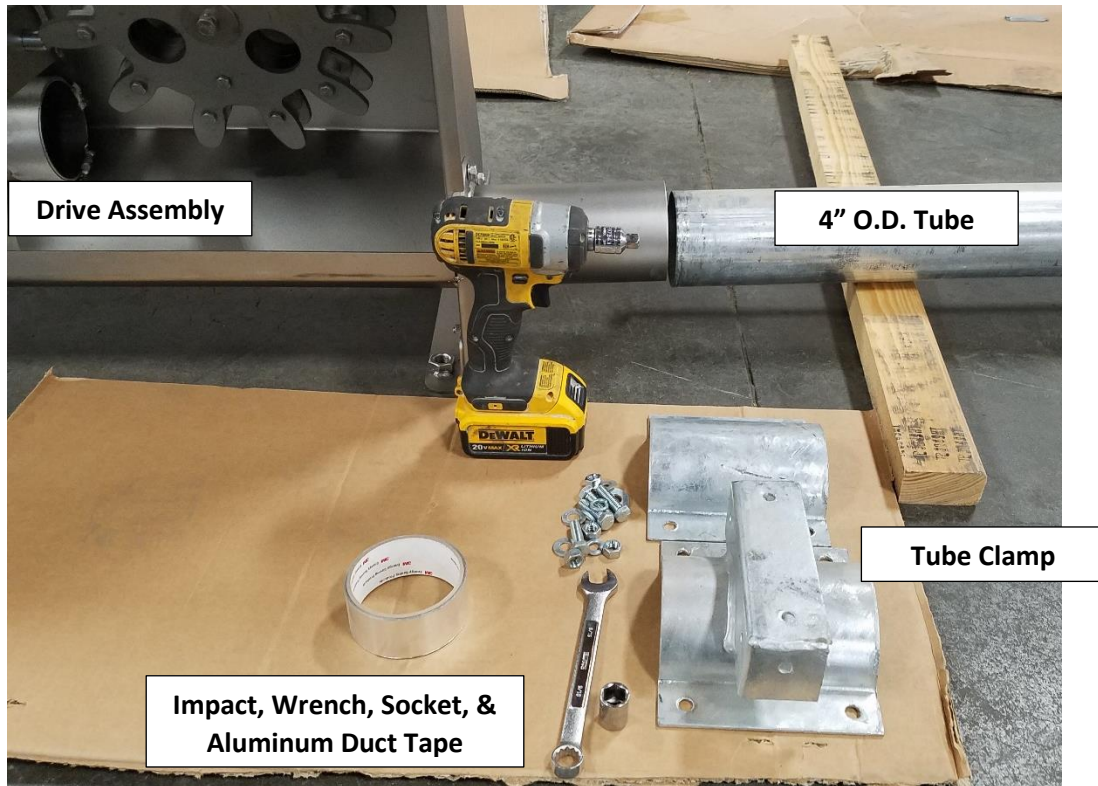


Step 2.

- Install Spring Tensioning Rod and Loosen Drive Wheels

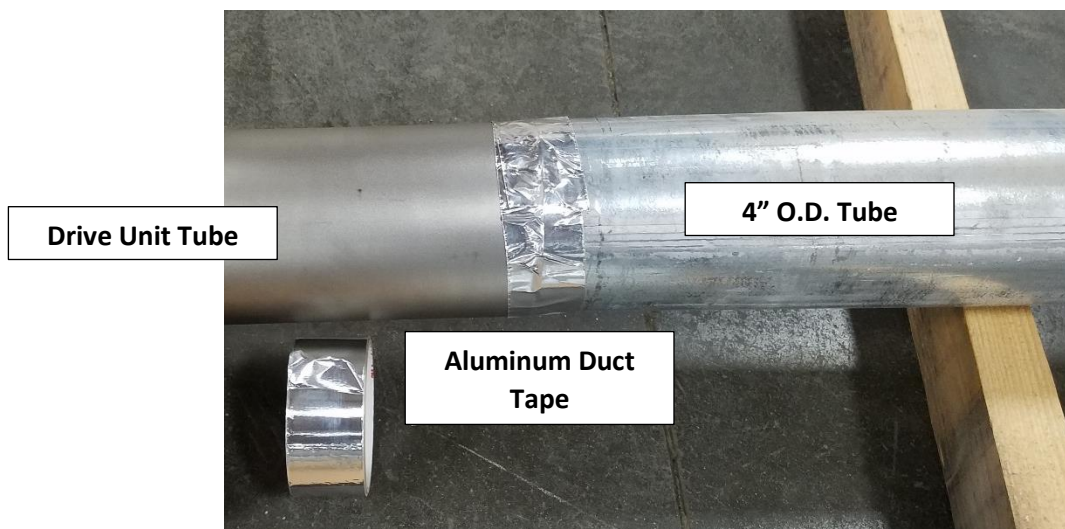


How to Install the Tube to Drive Unit



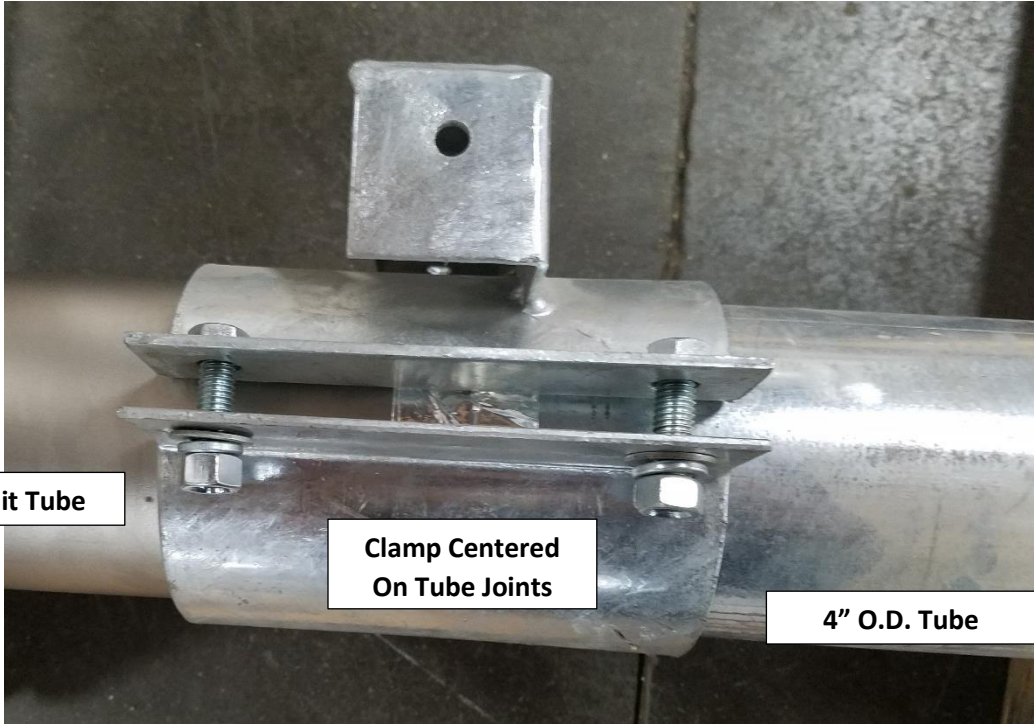
Step 1.

- Butt 4" O.D. Tube Up to Drive Unit Tube and Apply Aluminum Duct Tape



Step 2.

- Attach Tube Clamp So The Center Of The Joint Is In The Middle Of The Clamp And Then Tight Bolts

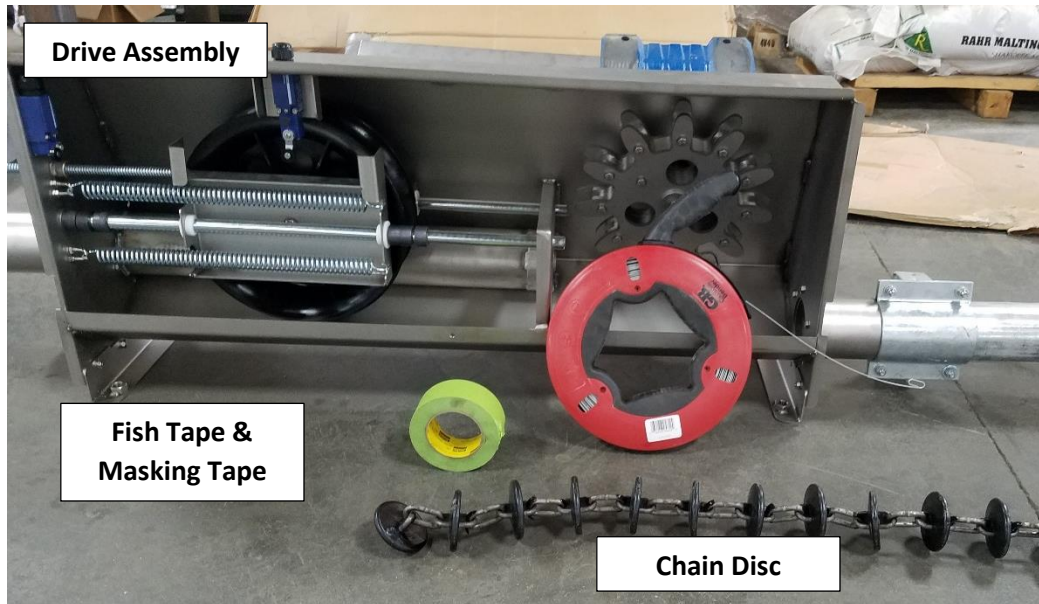


Drive Unit Tube

**Clamp Centered
On Tube Joints**

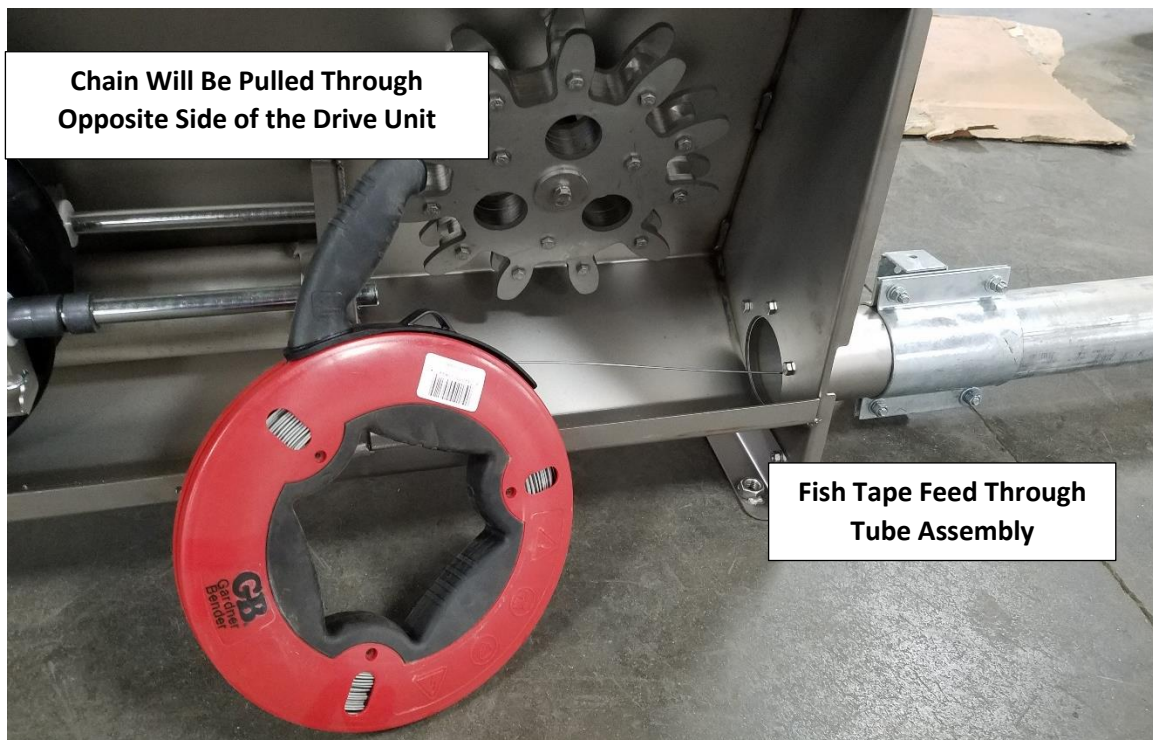
4" O.D. Tube

How to Install the Chain Disc



Step 1.

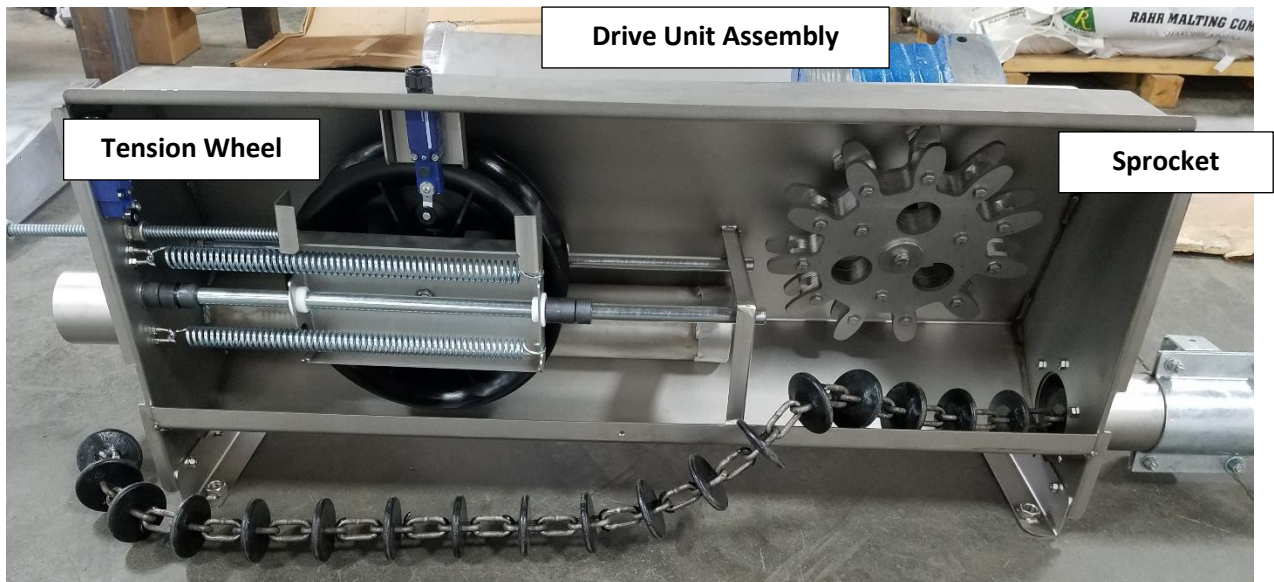
- Feed The Fish Tape Through Entire Assembled Tube System and Hook On With Masking Tape. ****Note You Will Pull One End Of The Chain Disc Through The Opposite Side Of The Drive Unit**** The Below Picture Is Just For Reference





Step 2.

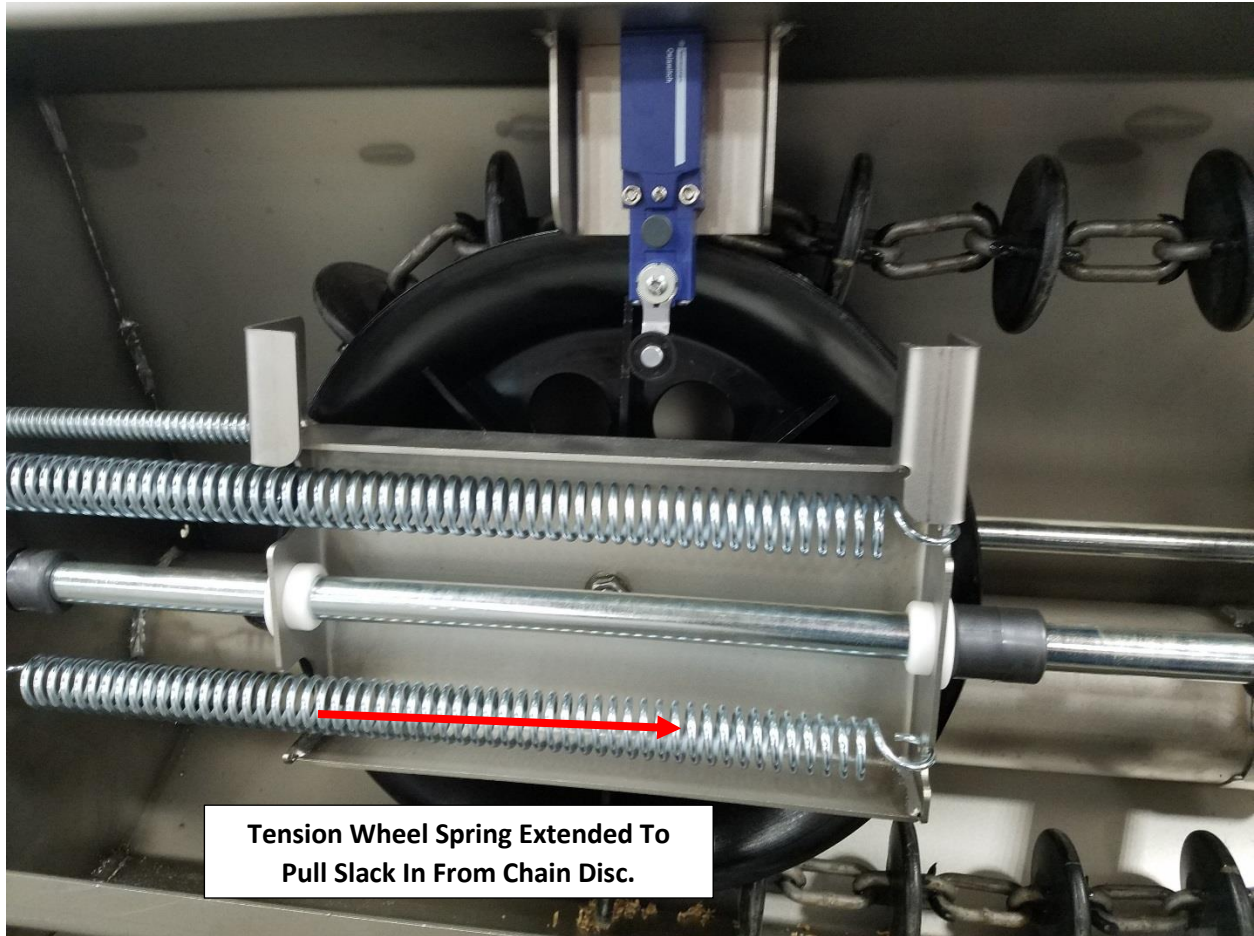
- Pull The Chain Disc System Through the Entire Tube System.



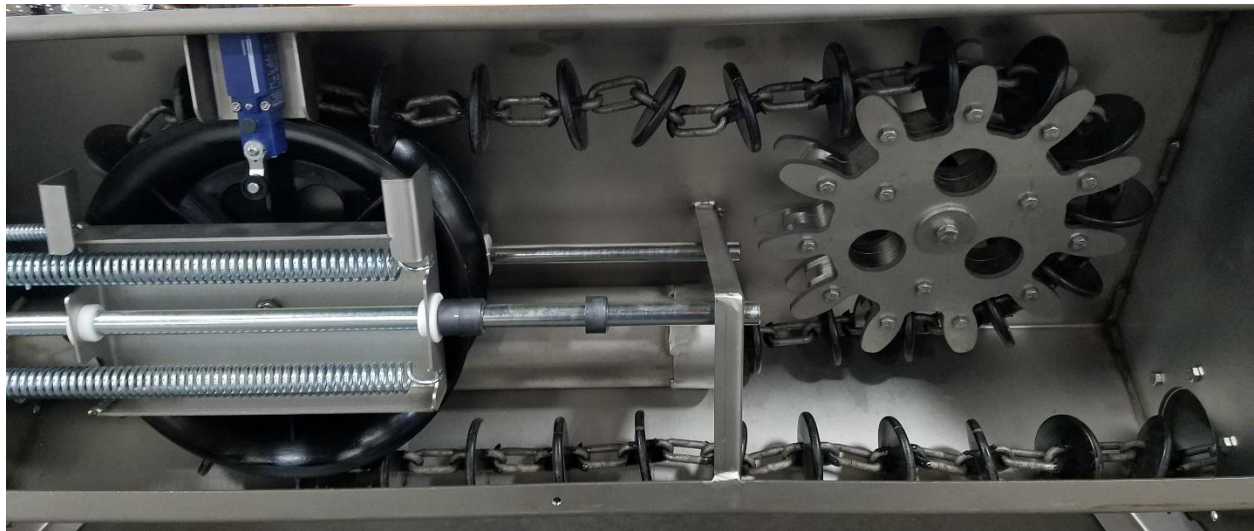
Step 3.

- Once The Chain Disc Has Been Pulled Through Route The Chain Around the Sprocket and Tension Wheel.





Tension Wheel Spring Extended To Pull Slack In From Chain Disc.

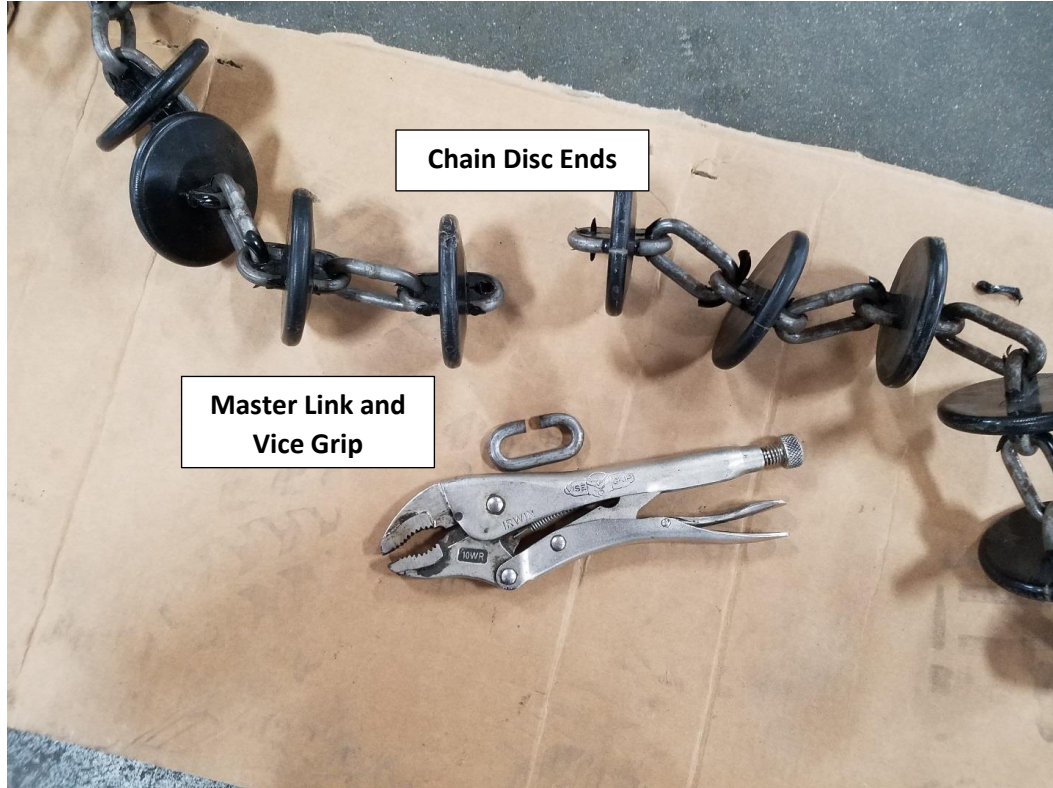


Step 4.

- With the Tension Wheel Loosen Pull Slack From the Chain and ID Where to Splice Chain Disc Ends. Removed Cut Excess Chain Disc Cut Off With Angle Grinder and Cutting Wheel.

Step 5.

- Splice Chain Disc Ends Together with Master Link. ****Note Use This Same Step If Total Chain Disc Length Is Needed to Pull Through Assembled Tube System Before Step 2 In "How To Install Chain Disc System".****





Step 6.

- Splice Chain Disc Ends Together with Master Link. ****Note Use This Same Step If Total Chain Disc Length Is Needed to Pull Through Assembled Tube System Before Step 2 In “How To Install Chain Disc System” .****

Step 7.

- Loosen The Tensioning Rod For The Tension Wheel to Pull The Remaining Slack Out Of The Chain Disc System. ****Note The Tension Wheel Bracket Cannot Engage the Chain Brake Sensor. If The Bracket Does Engage The Sensor Repeat Steps 4-7.**