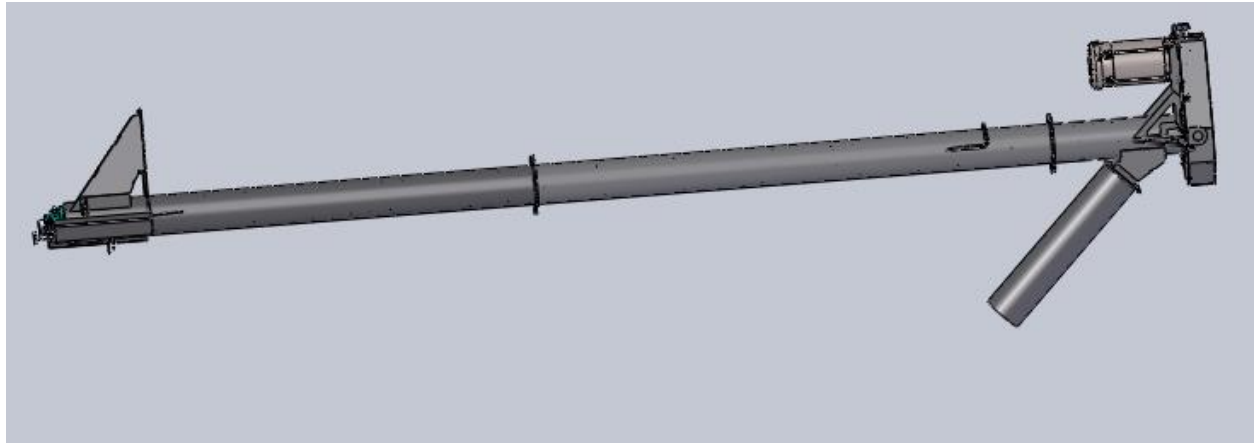


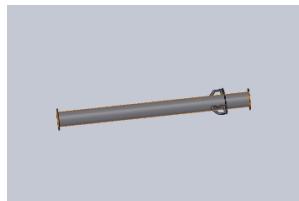
Vertical Auger Assembly Instructions



Vertical Auger Components:



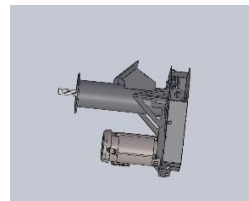
Bottom Assembly



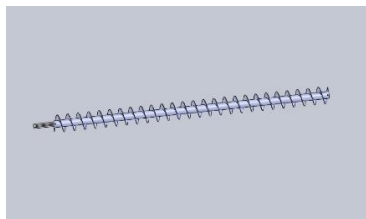
Middle Assembly



Discharge



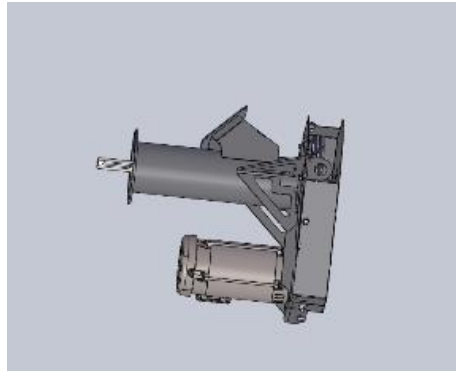
Head Assembly



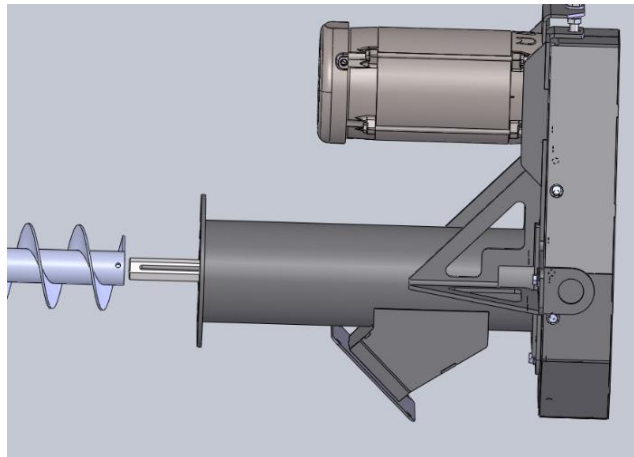
Flighting

*****The length of your auger will determine how many assemblies you receive*****

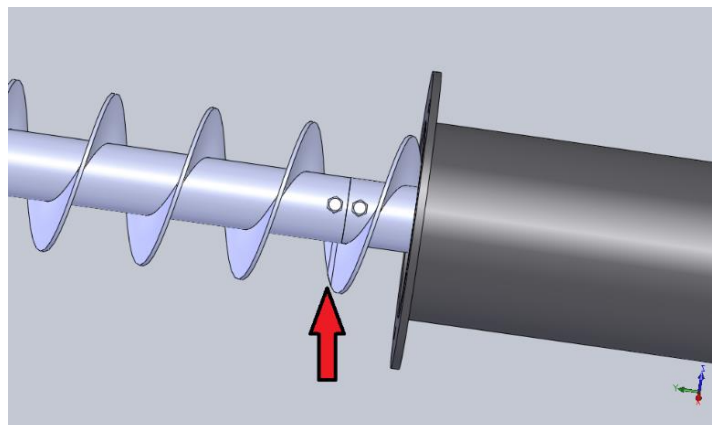
Step 1: Place the Head Assembly on a surface where you will have enough room to assemble the entire vertical auger on. (It is recommended to lay the assemblies down and built them horizontally before standing up into position.)



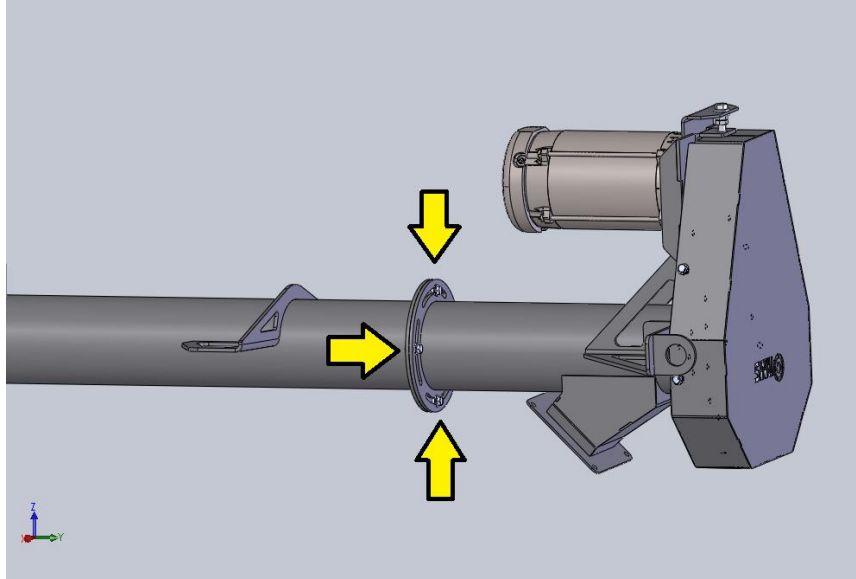
Step 2: Attach the Middle Flighting to the Head Assembly Flighting with a $\frac{1}{4}$ -20x 2 $\frac{1}{2}$ " bolt and $\frac{1}{4}$ -20 nut.



Make sure to line up the flighting spirals as well as the bolt holes will allow to ensure maximum grain flow (indicated with the red arrow below).

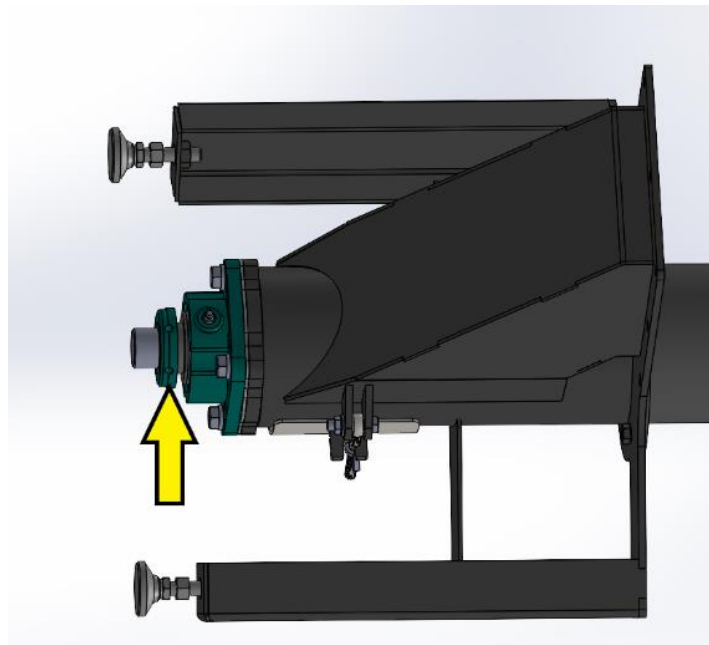


Step 3: Install the Middle Assembly over the lighting and secure the flanges of both the Middle Assembly and the Head Assembly using (4) 3/8-16 flange bolts and flange nuts (indicated with yellow arrows below). If you have more than one middle assembly, install the one with the fork pockets to the Head Assembly.

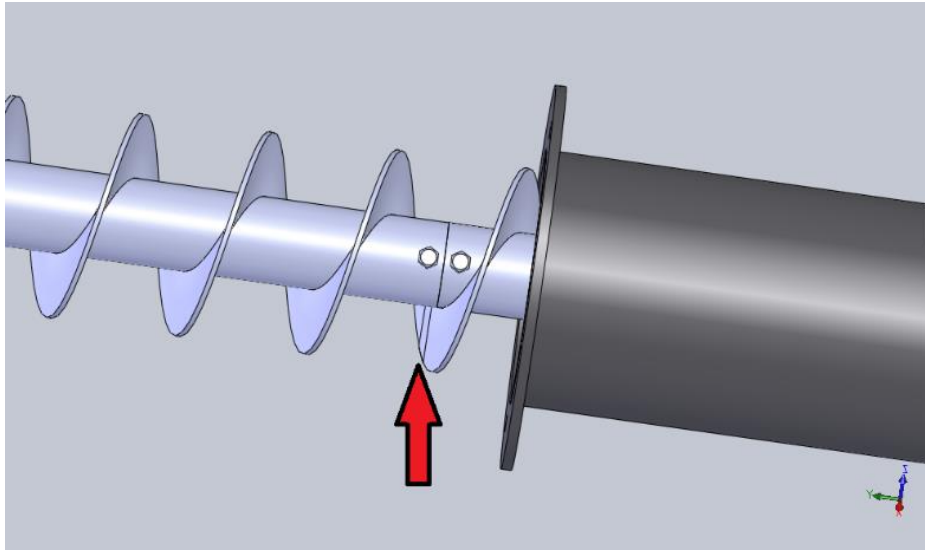


*****Repeat steps 2 and 3 if you have multiple Middle Assemblies*****

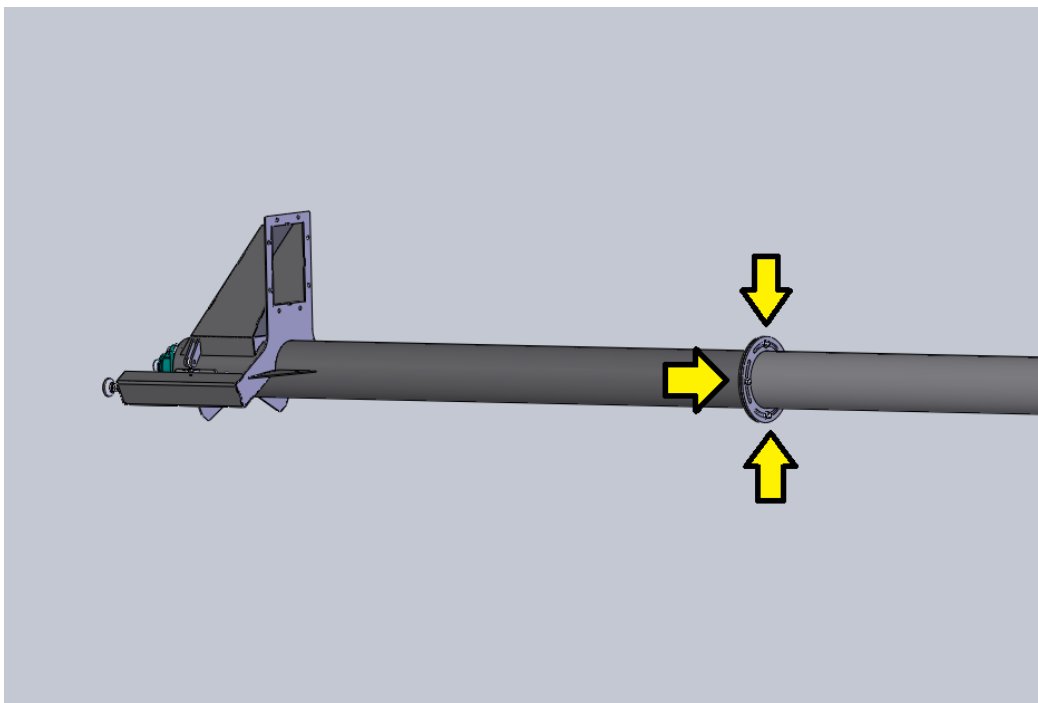
Step 4: Remove the lighting from the Bottom Assembly by loosening the (2) set screw on the bearing and pulling the lighting out of the bearing (a rubber mallet may be helpful to get the lighting out of the bearing after the set screws are loosened).



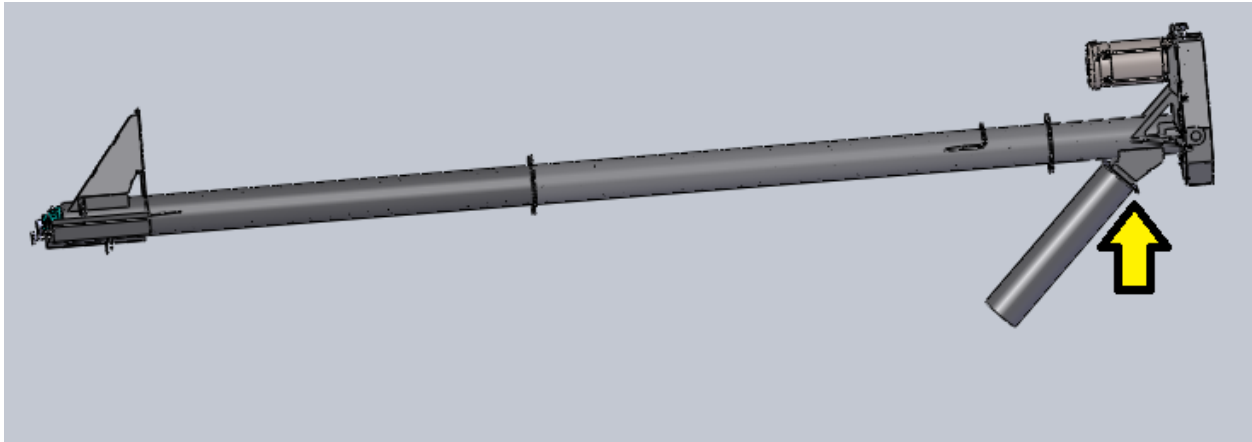
Step 5: Attach the Bottom Assembly Flighting to the Middle Assembly Flighting with a $\frac{1}{4}$ -20x 2 $\frac{1}{2}$ " bolt and $\frac{1}{4}$ -20 nut. Make sure to line up the flighting spirals as well as the bolt holes will allow to ensure maximum grain flow.



Step 6: Install the Bottom Assembly over the flighting and secure the flanges of both the Bottom Assembly and the Middle Assembly using (4) $\frac{3}{8}$ -16 flange bolts and flange nuts (indicated with yellow arrows below). The flighting will need to be re-inserted back through the bearing on the Bottom Assembly in order to bring both assemblies together. Retighten the (2) set screws on the bearing AFTER the flanges have been bolted together.



Step 7: Install the Discharge to the Head Assembly using (4) 3/8-16 flange bolts and flange nuts indicated with yellow arrow below.



Step 8: The vertical auger is now assembled and can be stood up into place.

